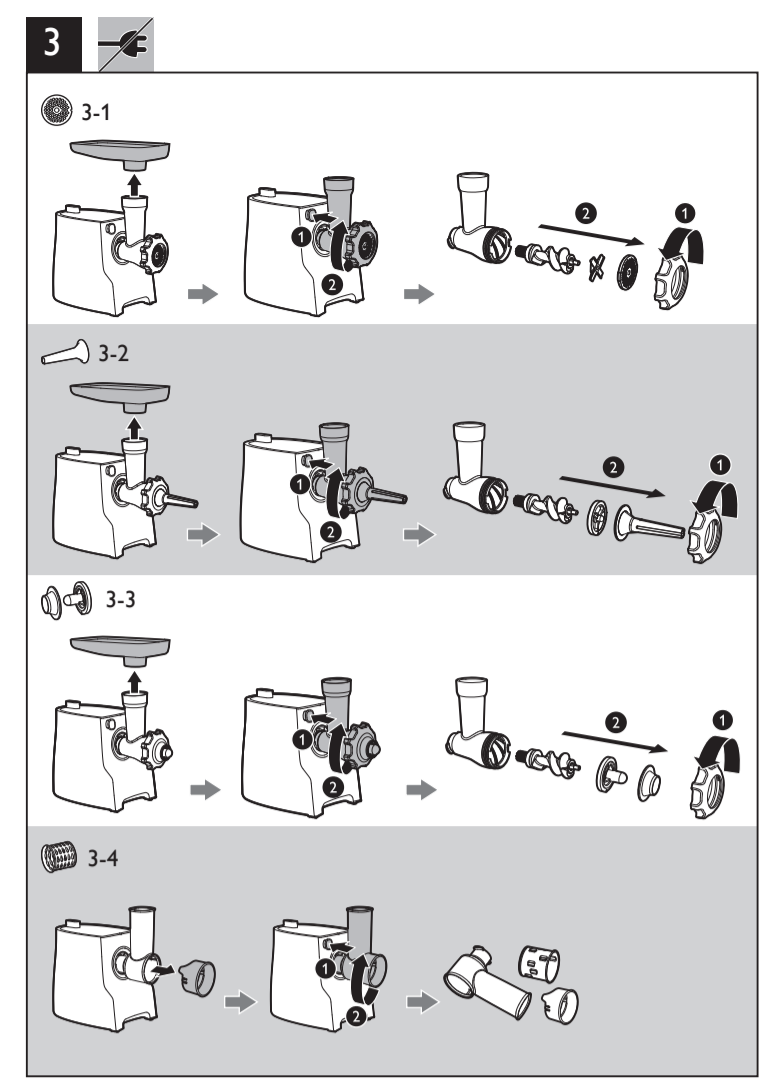
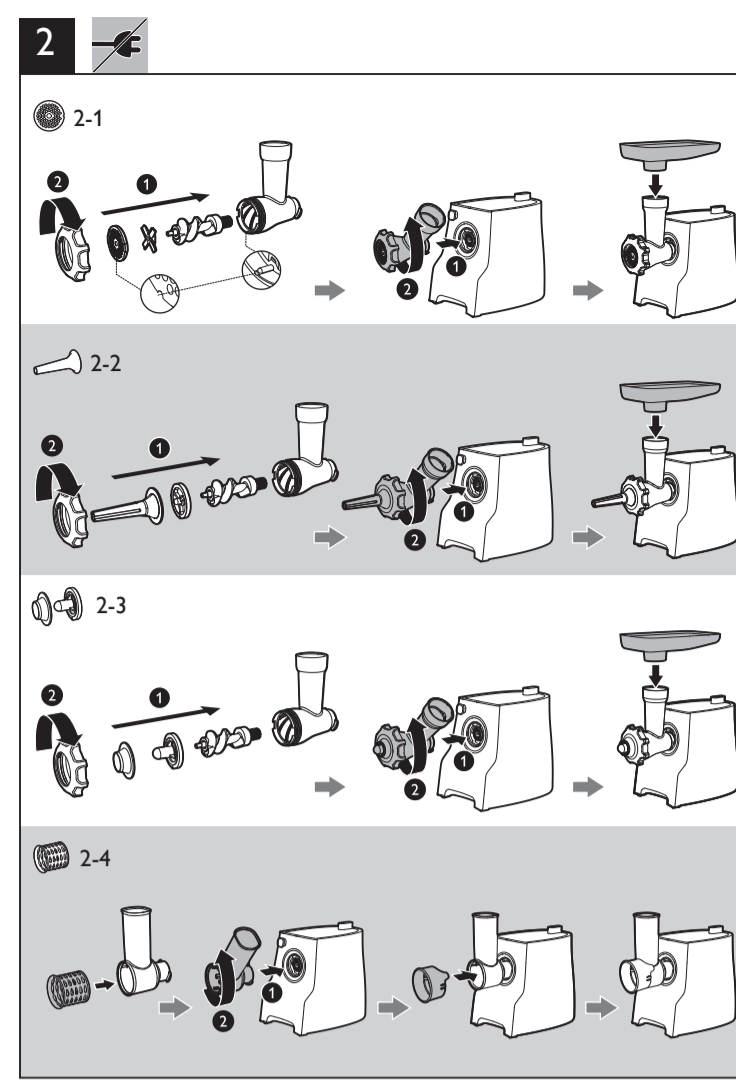
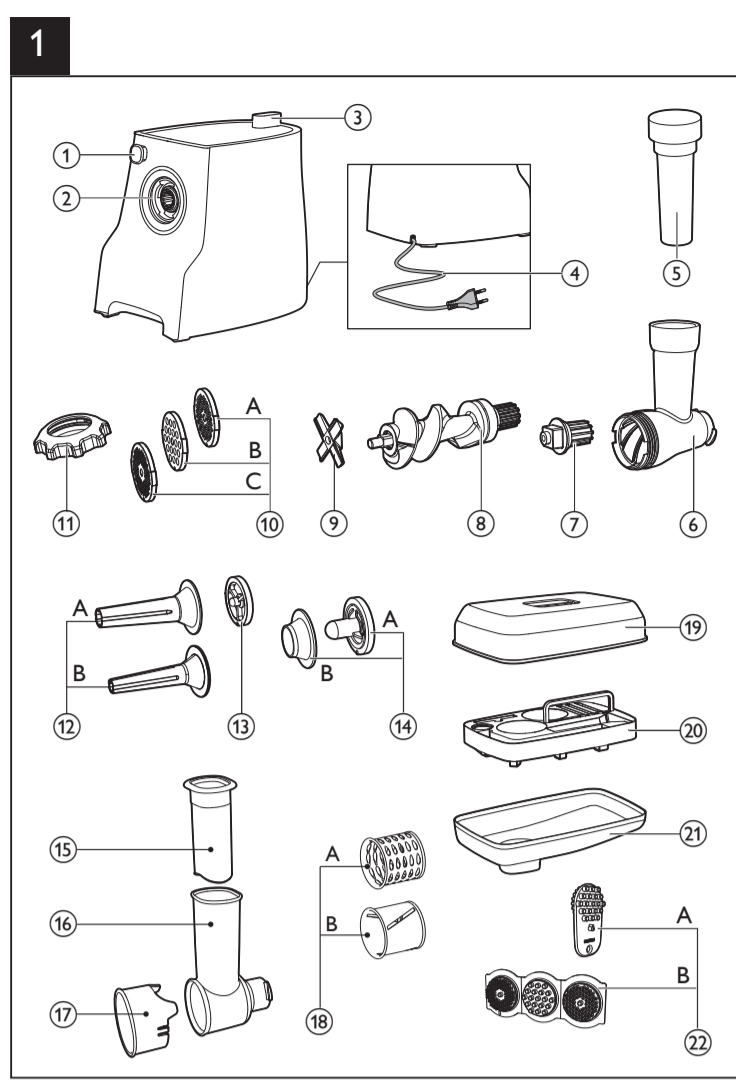




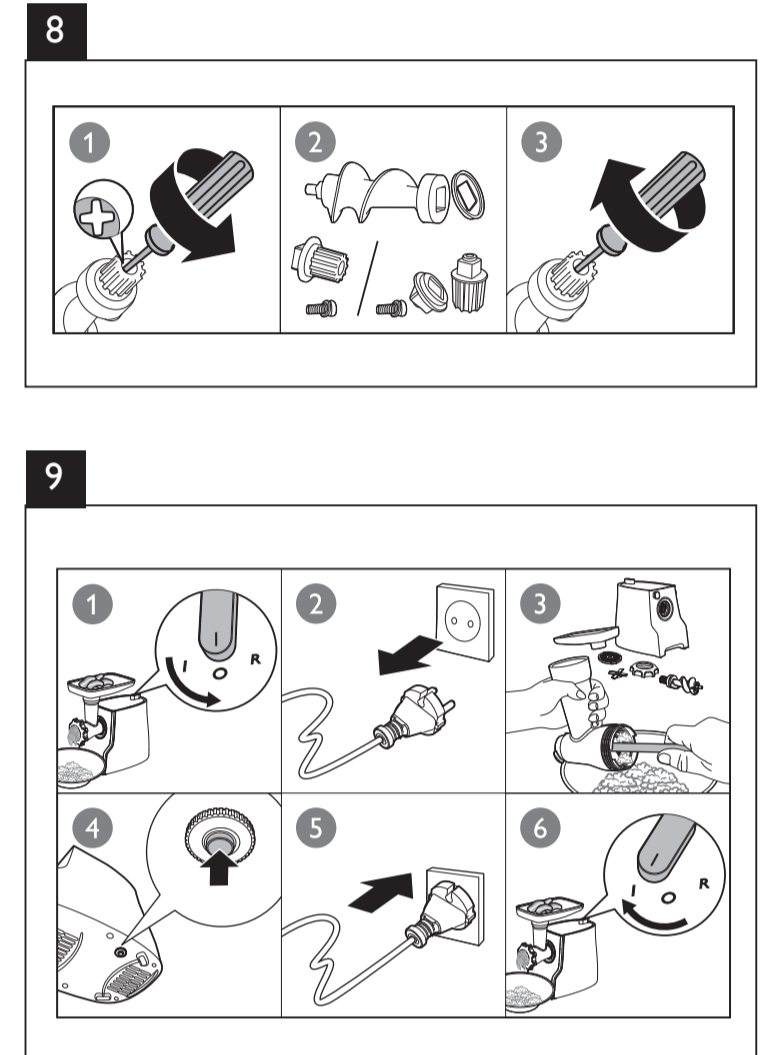
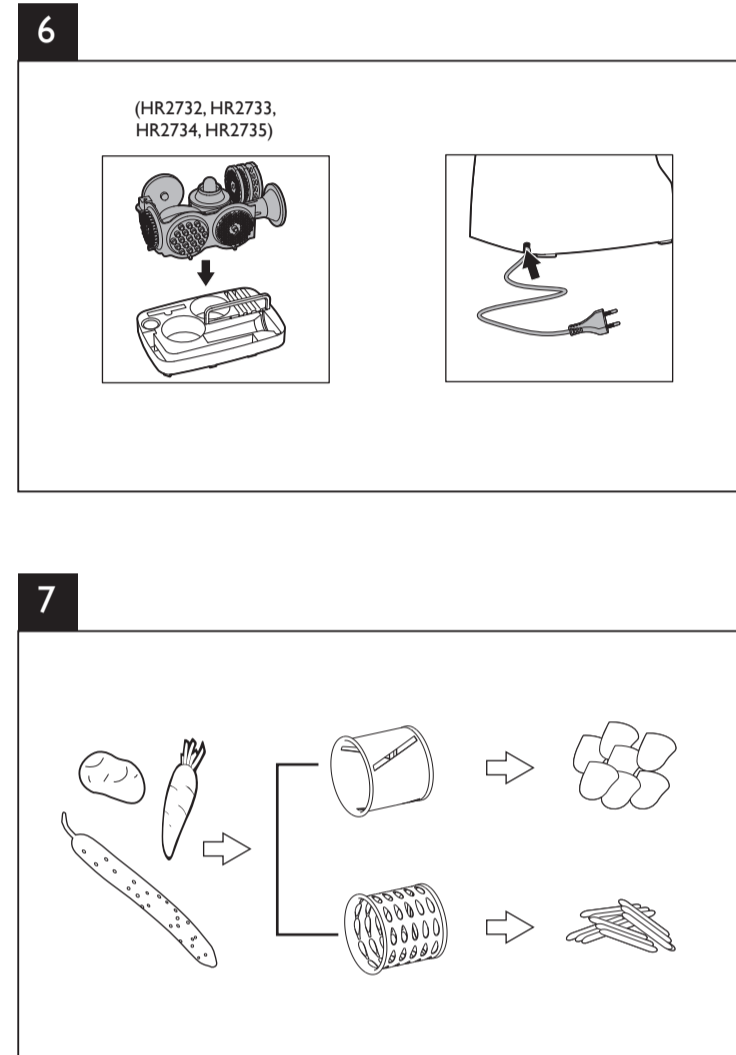
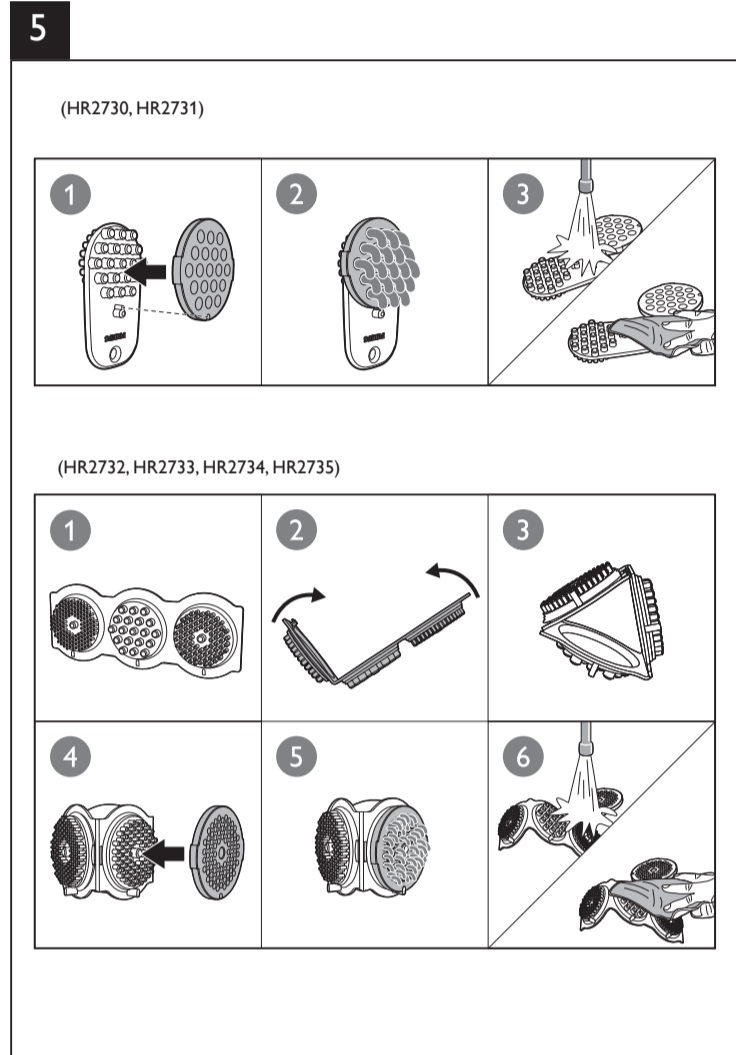
HR2730
HR2731
HR2732
HR2733
HR2734
HR2735

EN User manual RU Руководство пользователя
UK Посібник користувача

PHILIPS



	X	X	✓	✓	X	✓
	✓	✓	✓	✓	X	✓
	✓	✓	✓	✓	X	✓
	✓	X	✓	✓	✓	✓
	✓	✓	✓	✓	✓	✓
	✓	✓	✓	✓	✓	✓
	✓	X	✓	✓	X	✓



PHILIPS Specifications are subject to change without notice
© 2013 Koninklijke Philips Electronics N.V.
All rights reserved.
HR2730_2731_2732_2733_2734_2735_UM_EEU_V.10 3140 035 29082

English

1 Important
Read these instructions for use carefully before using the appliance and save them for future reference.

Danger

- Do not immerse the motor unit in water nor rinse it under the tap.
- Do not connect the appliance to a timer switch.

Warning

- Before you connect the appliance to the power, make sure that the voltage indicated on the bottom of the appliance corresponds to the local power voltage.
- If the power cord, the plug, or other parts are damaged, do not use the appliance.
- If the power cord is damaged, you must have it replaced by Philips, a service center authorized by Philips, or a similarly qualified person to avoid a hazard.
- This appliance is not intended for use by persons (including children) with reduced physical, sensory or mental capabilities, or lack of experience and knowledge, unless they have been given supervision or instruction concerning use of the appliance by a person responsible for their safety.
- For their safety, do not allow children to play with the appliance.
- Be very careful when you handle the cutter, especially when you remove it from the worm shaft and during cleaning. The cutting edges are very sharp!
- Before you remove any accessory, switch the appliance off and unplug it.
- Do not use your fingers or an object (e.g. a spatula) to push ingredients into the hopper while the appliance is running. Only the pushers are to be used for this purpose.
- Do not insert your fingers in the metal drum while the appliance is running.

Caution

- The appliance is intended for household use only.
- Before you connect the appliance to the mains, make sure that the appliance is assembled correctly.
- Never use any accessories or parts from other manufacturers or that Philips does not specifically recommend. If you use such accessories or parts, your guarantee becomes invalid.
- Always switch the appliance off by turning the switch knob to **O**.
- Do not let the appliance run unattended.
- Do not exceed the maximum operating time of 4 minutes under heavy load applications. Let the appliance cool down to room temperature before next operation.
- Do not use the **R** button with the plastic hopper.
- Noise level: Lc = 87 dB [A]

HR2732, HR2733, HR2734 and HR2735 only

The appliance is fitted with a safety feature which safeguards against overloading. In case the appliance is overloaded, it automatically activates the overload protection and switches off. If this occurs, set the switch knob to **O**, unplug the appliance and let it cool down for 15 minutes. Remove the residue inside the hopper and then press the overload reset button on the bottom of the motor unit (Fig. 9).

Electromagnetic fields (EMF)

This Philips appliance complies with all standards regarding electromagnetic fields (EMF). If handled properly and according to the instructions in this user manual, the appliance is safe to use based on scientific evidence available today.

Recycling

Your product is designed and manufactured with high quality materials and components, which can be recycled and reused. When you see the crossed-out wheel bin symbol attached to a product, it means the product is covered by the European Directive 2002/96/EC. Never dispose of your product with other household waste. Please inform yourself about the local rules on the separate collection of electrical and electronic products. The correct disposal of your old product helps prevent potentially negative consequences on the environment and human health.

2 Introduction

Congratulations on your purchase and welcome to Philips! To fully benefit from the support that Philips offers, register your product at www.philips.com.

With this meat mincer you can

- mince meat
- make sausages
- make kebbe (HR2730 Middle East Asia, HR2732, HR2733, HR2734 and HR2735 only)
- cut vegetables (HR2731, HR2733 and HR2735 only)

*** Tip**

- For more recipes, go to www.kitchen.philips.com.

3 What's in the box (Fig. 1)

- Hopper release button
• Press and hold it when you remove the hopper.
- Motor unit
- Switch knob for power and reverse modes **O** / **I** / **R**
• Switch off (**O**) or on (**I**) the meat mincer.
• Switch to **R** to reverse the motor.
- Power cord
- Pusher for the metal hopper
- Metal hopper
- Extra gear for the worm shaft (HR2730, HR2731, HR2733 and HR2735 only)
- Worm shaft
- Cutter/Knife
- Hygienic stainless steel grinding discs
• **A**: Coarse grinding disc (diameter of 8 mm)
• **B**: Medium grinding disc (diameter of 5 mm)
• **C**: Fine grinding disc (diameter of 3 mm) (HR2732, HR2733, HR2734 and HR2735 only)
- Screw ring
- Sausage horns
• **A**: Large sausage horn (diameter of 22 mm)
• **B**: Small sausage horn (diameter of 12 mm)
- Sausage separator
- Kebbe maker (HR2730 Middle East Asia, HR2732, HR2733, HR2734 and HR2735 only)
• **A**: Kebbe separator
• **B**: Kebbe shaper
- Pusher for the plastic hopper (HR2731, HR2733 and HR2735 only)
- Plastic hopper (HR2731, HR2733 and HR2735 only)
- Shield (HR2731, HR2733 and HR2735 only)
- Metal drums (HR2731, HR2733 and HR2735 only)
• **A**: Coarse gratter drum
• **B**: Slicer drum
- Dust cover (HR2732, HR2733, HR2734 and HR2735 only)
- Accessories tray (HR2732, HR2733, HR2734 and HR2735 only)
- Metal meat tray
- Innovative cleaning tool
• **A**: (HR2730 and HR2731 only)
• **B**: (HR2732, HR2733, HR2734 and HR2735 only)

4 Mince meat

Before you start, make sure you assemble according to Fig. 2-1. For disassembly, refer to Fig. 3-1.

Mince meat

Note

- Never grind bones, nuts, or other hard items.
- Never use frozen meat! Before you grind the meat, defrost it first.
- Do not overload the appliance by pushing too much meat into the hopper.
- Depending on the granularity of minced meat, select the proper grinding disc. You can also grind for more than once for finer texture.

5 Make sausages

Before you start, make sure you assemble according to Fig. 2-2. For disassembly, refer to Fig. 3-2.

Make sausages

Note

- Do not block the air outlet grooves of the sausage horn.
- Do not make the sausages too thick in case the sausage skin is overstretched.
- Keep the sausage skin wet to prevent it from sticking on the sausage horn.

Recipe

Sausages

Ingredients:

- 800 g pork belly
- 1.6 kg pork shoulder
- 4 m of pork sausage skin (wet)
- Seasoning such as salt, pepper, spices and herbs of your choice

Directions:

- Chop pork into pieces to fit the hopper of the meat mincer.
- Grind the pork belly and shoulder together using the coarse screen.
- Add seasoning and mix well (tip: fry a spoonful of the mixture to check the taste).
- Apply the wet sausage skin to the sausage horn, and attach to the meat mincer (no blade needed).
- Leave adequate sausage skin at the beginning before turning on the meat mincer.

6 Make kebbe (HR2730 Middle East Asia, HR2732, HR2733, HR2734 and HR2735 only)

Before you start, make sure you assemble according to Fig. 2-3. For disassembly, refer to Fig. 3-3.

Make kebbe

Recipe

Kebbe

Yield: 5-8 servings

Ingredients:

- Outer casing**
 - 500 g lamb or fat-free mutton, cut into strips
 - 500 g bulgur wheat, washed and drained
 - 1 small onion and cooked
- Filling**
 - 400 g lamb, cut into strips
 - 15 ml oil
 - 2 medium onions, finely chopped
 - 5-10 ml ground allspice
 - 15 ml plain flour
 - salt and pepper

7 Cut vegetables (HR2731, HR2733 and HR2735 only)

Before you use the appliance for the first time, thoroughly clean the parts that come into contact with food.
Before you start, make sure you assemble according to Fig. 2-4. For disassembly, refer to Fig. 3-4. Fig. 7 indicates the foods that each drum is applicable to and the cutting shapes.

Directions:

- Outer casing**
 - Mince the meat, wheat, and onion together with the fine grinding disc.
 - Thoroughly mix the minced ingredients, and then mince the mixture twice again.
 - Use the kebbe maker to shape the mixture into kebbe casing.
- Filling**
 - Mince the meat with the medium grinding disc.
 - Fry the onion chops until they turn golden brown.
 - Add the minced meat and other ingredients in, and then cook for 1-2 minutes.
 - Drain off excessive fat and cool the filling down.
- Cooking**
 - Push some filling into the outer casing, and then pinch both ends to seal it.
 - Heat the oil for deep frying (190°C).
 - Deep fry the kebbe for 3-4 minutes, or until it turns golden brown.

7 Cut vegetables (HR2731, HR2733 and HR2735 only)

Cut vegetables into pieces or strips that can be easily pushed into the hopper.

- Switch on the appliance.
- Push the vegetables into the hopper.

*** Tip**

- You can also grate cheese.

8 Cleaning and maintenance (Fig. 4, Fig. 5 and Fig. 6)

Note

- Before you use the appliance for the first time, thoroughly clean the parts that come into contact with food.
- Before you remove accessories or clean the motor unit, switch off and unplug the appliance.
- Do not immerse the motor unit in water nor rinse it under the tap.
- Do not clean the metal parts in a dishwasher.
- Clean the main unit with a moist cloth.
- Pass pieces of bread through the cutter housing to remove any meat left.
- Wash removable parts with a soft brush in soapy water, rinse them with clear water, and then dry them with soft cloth or tissues immediately.
- Lightly brush the metal parts with fat or oil to prevent rusting.
- Store the appliance according to Fig. 6.

*** Tip**

- Use the innovative cleaning tool to remove the remains stuck in the grinding discs, rinse them with clear water, and then dry them with soft cloth or tissues immediately.

9 Replace the gear (Fig. 8) (HR2730, HR2731, HR2733 and HR2735 only)

When you mince sticky or fatty meat, use the supplied plastic coupling. For instructions on how to replace the coupling, see Fig. 8.

Українська

1 Важливо

Уважно прочитайте ці інструкції перед тим, як використовувати пристрій, та зберігайте їх для подальшого використання.

Небезпечно

- Ні в якому разі не занурюйте блок двигуна у воду і не мийте його під краном.
- Не під'єднуйте пристрій до реле часу.

Попередження

- Перед тим як під'єднати пристрій до мережі, перевірте, чи напруга, вказана на дні пристрою, збігається із напругою у мережі.
- Якщо кабель живлення, штекер чи інші частини пошкоджені, не під'єднуйте пристрій.

