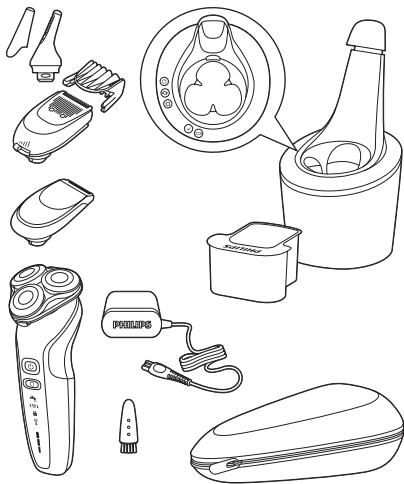


PHILIPS

S6680, S6650,
S6640, S6630,
S6620, S6610





EN The accessories supplied may vary for different products. The box shows the accessories that have been supplied with your appliance.

DE Das mitgelieferte Zubehör kann für verschiedene Produkte variieren. Die Verpackung zeigt das Zubehör, das mit Ihrem Gerät mitgeliefert wurde.

EL Τα παρεχόμενα εξαρτήματα ενδέχεται να διαφέρουν για διαφορετικά προϊόντα. Η συσκευασία δείχνει τα εξαρτήματα που παρέχονται με τη συσκευή σας.

FR Les accessoires fournis peuvent varier selon les différents produits. Les accessoires qui ont été fournis avec votre appareil sont indiqués sur l'emballage.

IT Gli accessori forniti potrebbero variare a seconda del prodotto. La confezione mostra gli accessori forniti con l'apparecchio.

NL De meegeleverde accessoires kunnen per product verschillen. Op de doos wordt aangegeven welke accessoires bij het apparaat worden geleverd.

ة.فلتخلم لتاجت نمل ل ي ف ةج ردم ل تاقح لم ل ا فلتخت دق
لكزا هج عم ة قح لم ل ا تاقح لم ل ا قود ن ص ل ا نِي بُي

AR

اب فلتختم تالو صحم رد تس ان كمم هدش هئارا ي ب ن ا ج ل ي اس و
ياه ه ل س و هدنه ن اشن رداك ن ي . دن ش اب توافق تم رگ ي د ك ي
دنا هدش هئارا ن ا ت هاگت سد اب هارمه هك تس ا ي ب ن ا ج

FA

ES Los accesorios suministrados pueden variar según los diferentes productos. La caja muestra los accesorios suministrados con el aparato.

PT Os acessórios fornecidos podem variar consoante os produtos. A caixa mostra os acessórios que são fornecidos com o seu aparelho.

TR Cihazla birlikte verilen aksesuarlar ürünlere göre farklılık gösterebilir. Kutuda, cihazın ile birlikte gönderilen aksesuarlar gösterilir.

NO Tilbehøret som følger med, kan variere for de ulike produktene. Du kan se hva slags tilbehør som følger med apparatet, på esken.

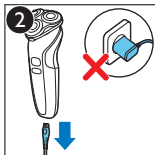
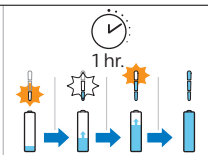
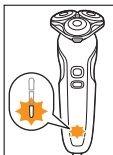
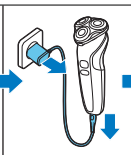
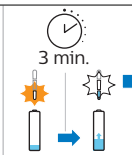
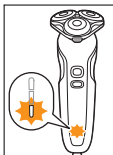
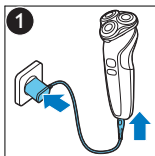
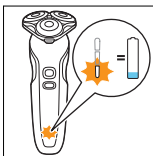
SV Olika tillbehör kan medfölja olika modeller. Information om vilka tillbehör som medföljer apparaten finns på produktkartongen.

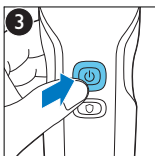
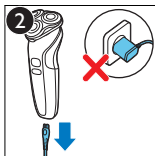
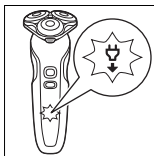
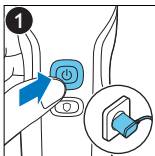
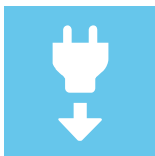
DA Det medfølgende tilbehør kan variere for forskellige produkter. Boksen viser det tilbehør, der leveres sammen med apparatet.

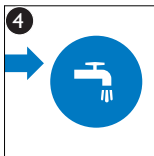
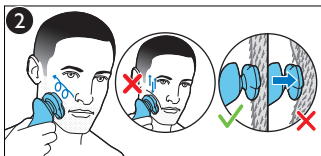
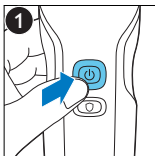
- FI** Toimitukseen sisältyvät tarvikkeet voivat vaihdella tuotekohtaisesti. Tämän laitteen mukana toimitetut tarvikkeet näkyvät laatikossa.
- MS** Aksesori yang dibekalkan mungkin berbeza-beza untuk berlainan produk. Kotak di bawah menunjukkan aksesori yang telah dibekalkan bersama perkakas anda.
- TH** อุปกรณ์เสริมที่ให้มาอาจแตกต่างกันไปตามผลิตภัณฑ์ อุปกรณ์เสริมที่มีมาพร้อมกับเครื่องของคุณจะแสดงไว้ที่กล่อง
- VI** Phụ kiện đi kèm có thể khác nhau cho những sản phẩm khác nhau. Hộp cho biết các phụ kiện được đi kèm với thiết bị của bạn.
- ZH-T** 隨附配件可能隨產品而異。包裝盒會顯示您產品隨附的配件。
- ZH-S** 隨附的附件可能因產品而異。包裝盒上會顯示隨附於您產品的附件。
- ID** Aksesori yang disertakan dapat berbeda-beda, tergantung pada produk. Kemasan menunjukkan aksesori yang telah disertakan dengan peralatan Anda.
- KO** 제공되는 액세서리는 제품에 따라 다를 수 있습니다. 보관함에 제품과 함께 제공된 액세서리가 있습니다.

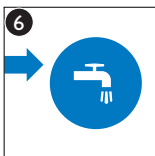
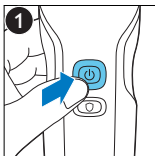
- EN** The accessories supplied may vary for different products. The box shows the accessories that have been supplied with your appliance.
- BG** Включените в комплекта принадлежности може да се различават за различните продукти. Кутията показва аксесоарите, които са били доставени с вашия уред.
- CZ** Dodané příslušenství se může u různých výrobků lišit. Tabulka zobrazuje příslušenství dodané s přístrojem.
- ET** Kaasasolevad tarvikud võivad erinevatel toodetel erineda. Karbil on näidatud teie seadmega kaasas olevad tarvikud.
- EL** Τα παρεχόμενα εξαρτήματα ενδέχεται να διαφέρουν για διαφορετικά προϊόντα. Η συσκευασία δείχνει τα εξαρτήματα που παρέχονται με τη συσκευή σας.
- HR** Priloženi dodatni pribor može se razlikovati ovisno o proizvodu. Na kutiji su prikazani proizvodi isporučeni s aparatom.
- HU** A mellékelt tartozékok termékenként különbözök lehetnek. Az aktuális termékéhez mellékelt tartozékok a dobozon láthatók.
- KK** Жинақпен берілген қосалқы құралдар әр түрлі өнімдерде өзгеше болуы мүмкін. Қорапта құрылғымен бірге берілетін қосалқы құралдар көрсетілген.

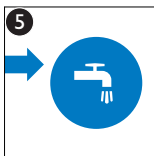
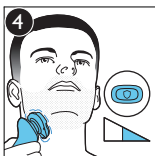
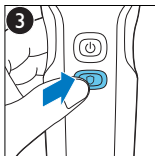
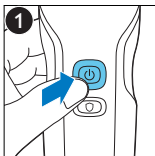
- LT** Komplektuojami priedai skiriasi priklausomai nuo gaminio. Ant dėžutės nurodyti priedai, kurie pridedami su jūsų prietaisu.
- LV** Piegādātie piederumi var atšķirties dažādiem produktiem. Uz kārbas norādīti piederumi, kas jāpiegādā kopā ar ierīci.
- PL** Dołączone akcesoria mogą się różnić w zależności od produktów. Na opakowaniu pokazane są akcesoria dołączone do Twojego urządzenia.
- RO** Accesoriile furnizate pot varia pentru diferite produse. Cutia indică accesoriile care au fost livrate împreună cu aparatul tău.
- RU** Входящие в комплект аксессуары могут различаться в зависимости от вида продукта. На упаковке перечислены аксессуары, которые поставляются с прибором.
- SK** Dodané príslušenstvo sa môže pre rôzne výrobky líšiť. Príslušenstvo, ktoré je súčasťou dodávky zariadenia, je zobrazené na škatuli výrobku.
- SL** Priložena dodatna oprema se lahko razlikuje glede na izdelek. Na škatli je prikazana dodatna oprema, ki je priložena aparatu.
- SR** Dodacikojisenalazeukompletumogu daserazlikuju uzavisnosti odproizvoda.Nakutijisuprikazani dodaci kojeste dobiliukompletusa aparatom.
- UK** Аксесуари, що додаються, можуть відрізнятися для різних виробів. На коробці показано, які аксесуари постачаються з Вашим пристроєм.

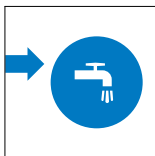
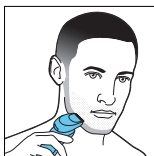
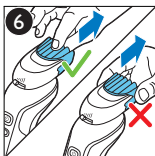
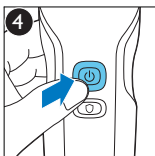
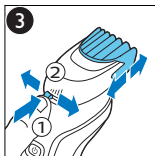
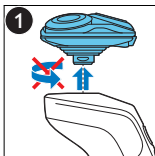
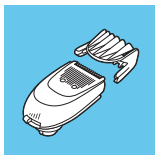


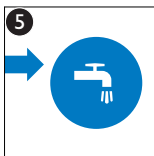
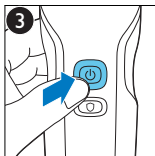
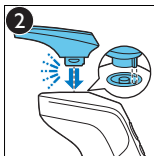
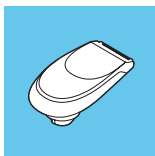


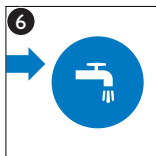
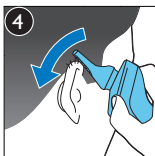
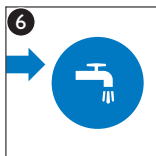
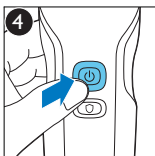
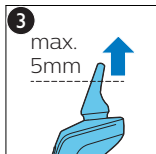
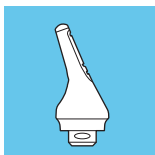


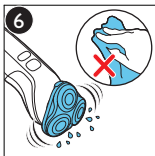
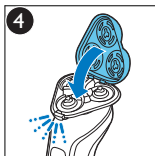
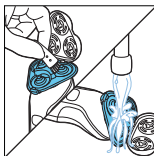
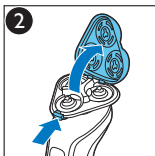
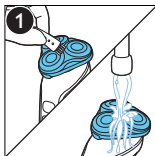
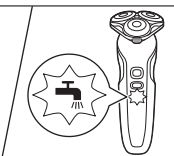


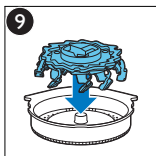
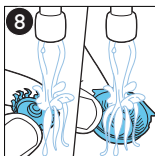
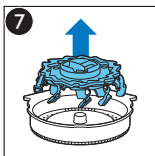
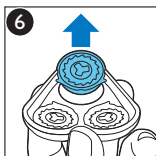
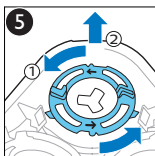
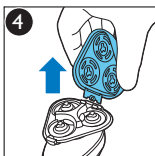
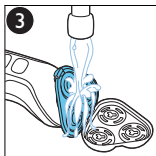
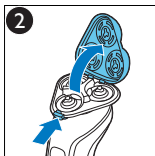
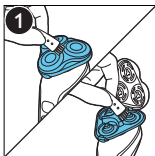


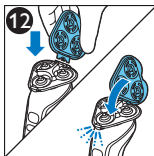
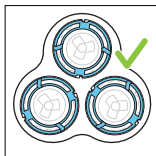
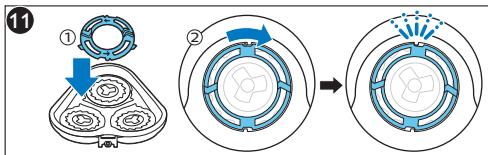
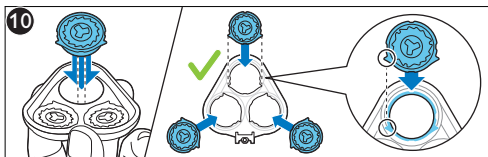


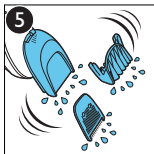
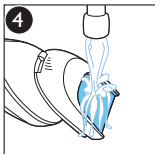
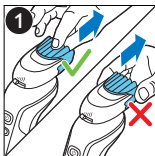
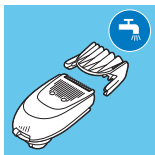




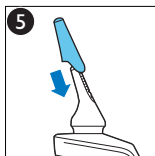
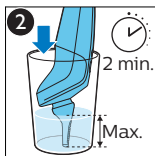
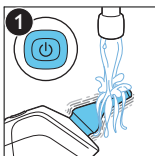
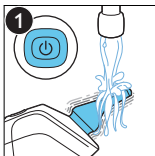
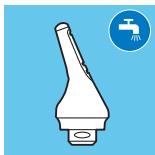


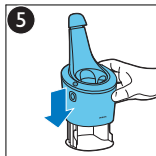
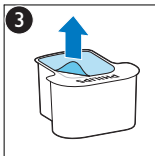
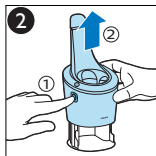
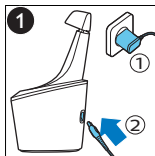


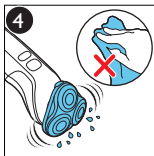
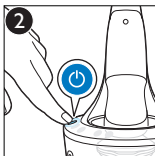
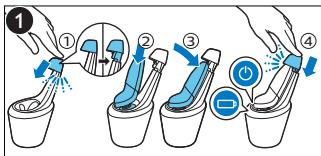
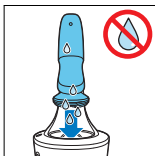


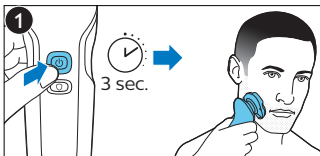
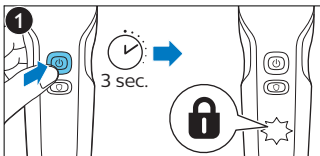


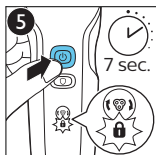
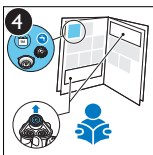
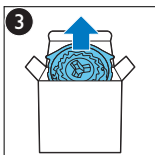
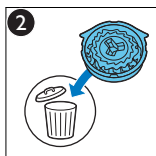
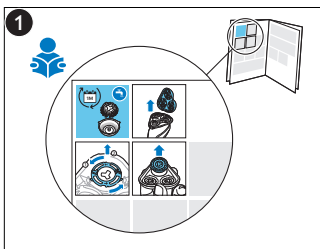


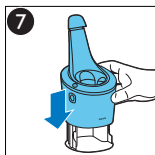
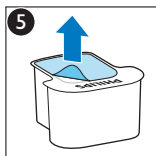
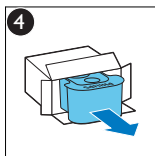
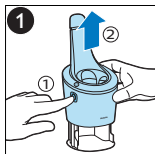














www.philips.com/support

© 2018 Koninklijke Philips N.V.
All rights reserved
3000.027.4754.1 (4/9/2018)

EAC



>75% recycled paper
>75% papier recyclé