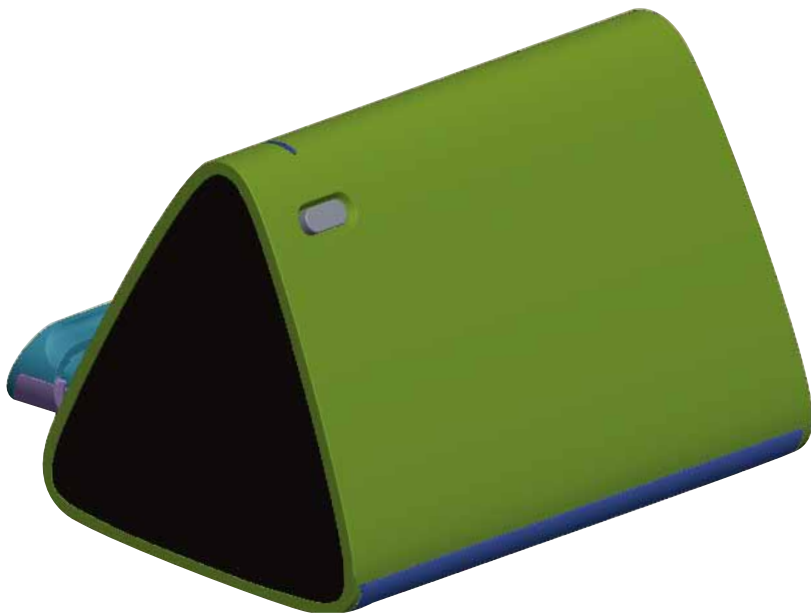


Registrer dit produkt, og få support på

[www.philips.com/welcome](http://www.philips.com/welcome)

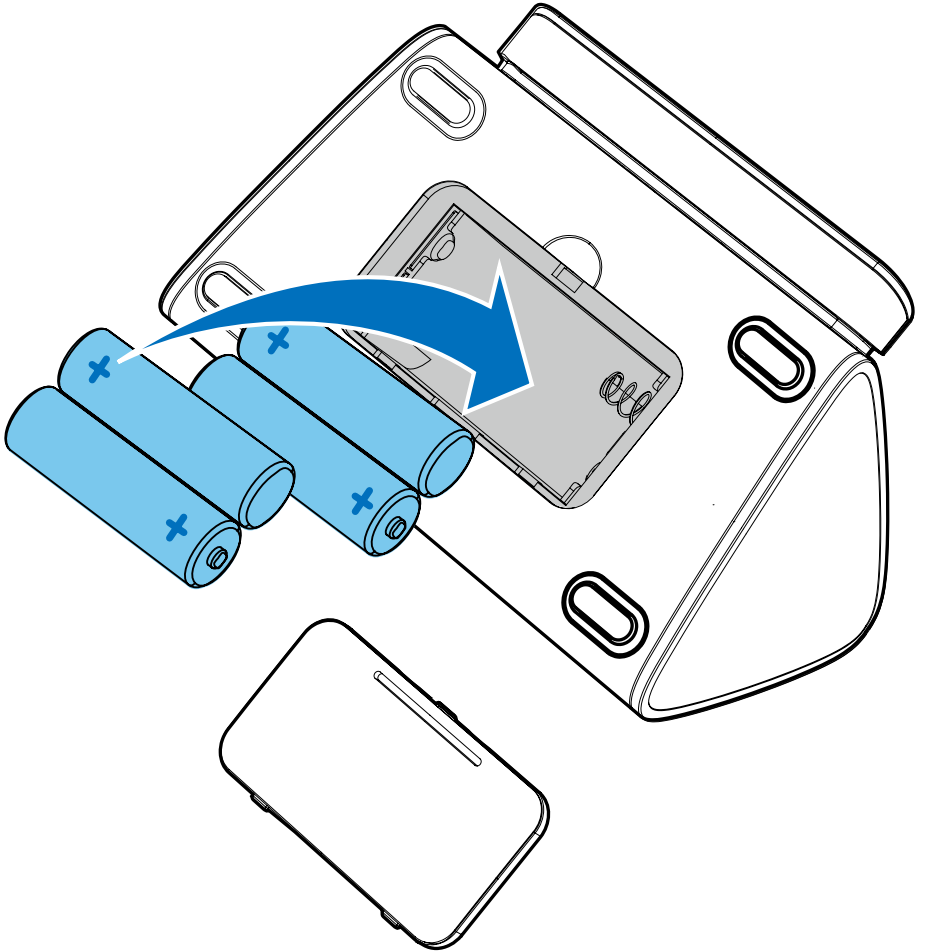
SBA1710



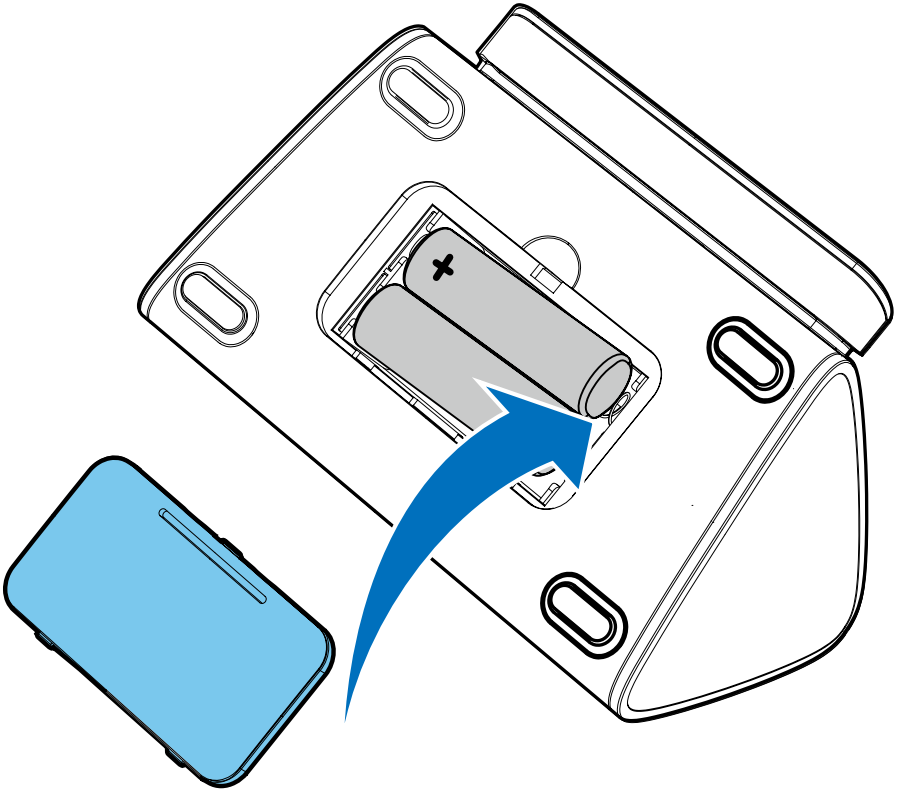
# User manual

**PHILIPS**

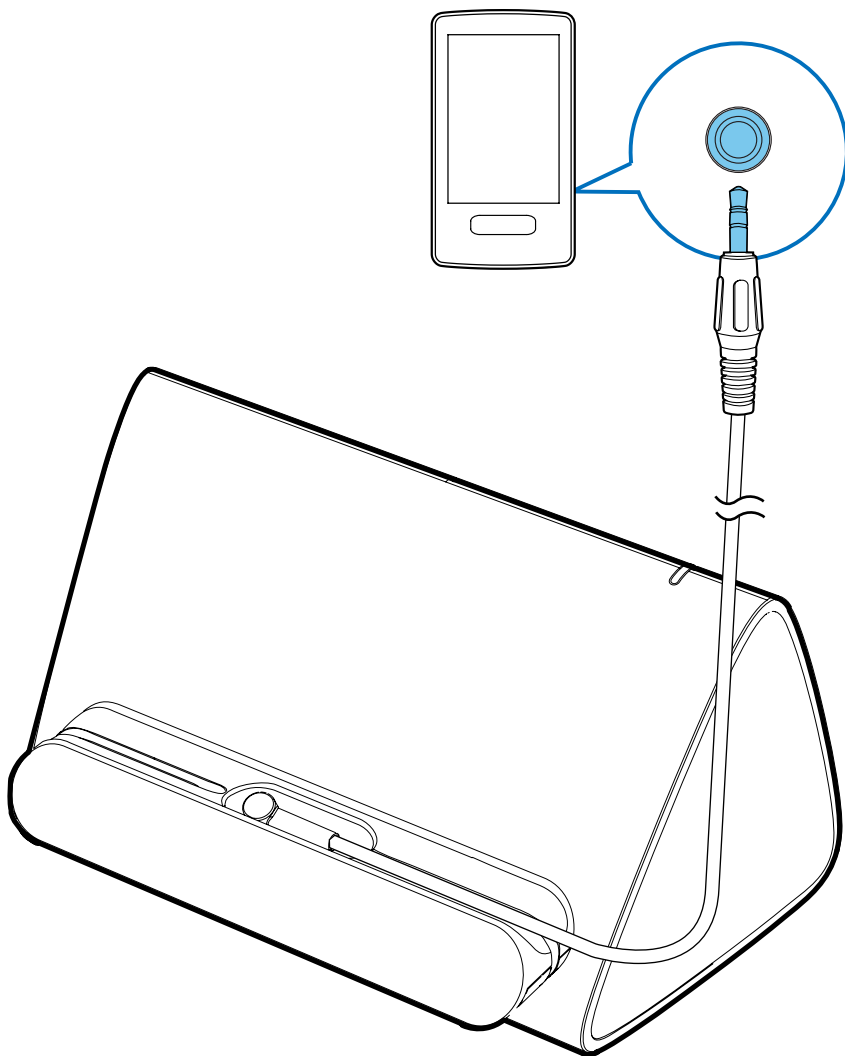
1



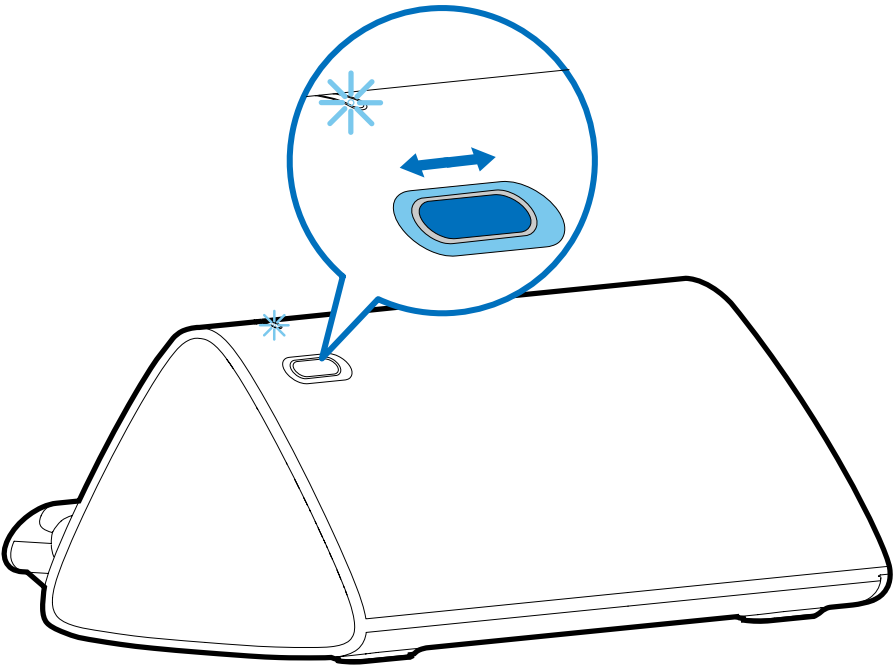
2



3



4



# 1 Important

---

## Safety

### Know these safety symbols



This 'bolt of lightning' indicates uninsulated material within your unit may cause an electrical shock. For the safety of everyone in your household, please do not remove product covering.

The 'exclamation mark' calls attention to features for which you should read the enclosed literature closely to prevent operating and maintenance problems.

### Warning

- To reduce the risk of fire or electric shock, the product shall not be exposed to dripping or splashing, and no objects filled with liquids, such as vases, shall be placed near the product.
- No naked flame sources, such as lighted candles, shall be placed near the product.
- Attention should be drawn to the environmental aspects of battery disposal.
- The battery shall not be exposed to excessive heat such as sunshine, fire or the like.
- Do not mix old and new batteries. Do not mix alkaline, standard (carbon zinc) or rechargeable batteries.

---

## Notice

Any changes or modifications made to this device that are not expressly approved by Philips Consumer Lifestyle may void the user's authority to operate the equipment.



This product complies with the radio interference requirements of the European Community.

---

## Disposal of your old product



Your product is designed and manufactured with high quality materials and components, which can be recycled and reused.



When this crossed-out wheeled bin symbol is attached to a product it means that the product is covered by the European Directive 2002/96/EC.

Please inform yourself about the local separate collection system for electrical and electronic products.

Please act according to your local rules and do not dispose of your old products with your normal household waste. Correct disposal of your old product helps to prevent potential negative consequences for the environment and human health.



Your product contains batteries covered by the European Directive 2006/66/EC, which cannot be disposed with normal household waste. Please inform yourself about the local rules on separate collection of batteries because correct disposal helps to prevent negative consequences for the environmental and human health.

## Environmental information

All unnecessary packaging has been omitted. We have tried to make the packaging easy to separate into three materials: cardboard (box), polystyrene foam (buffer) and polyethylene (bags, protective foam sheet.)

Your system consists of materials which can be recycled and reused if disassembled by a specialized company. Please observe the local regulations regarding the disposal of packaging materials, exhausted batteries and old equipment.



### Note

- The type plate is located on the bottom of the apparatus.

## 2 Your Portable speaker

Congratulations on your purchase and welcome to Philips!

To fully benefit from the support that Philips offers, register your product at [www.philips.com/welcome](http://www.philips.com/welcome).



# 3 Get started

- 1** Open the battery compartment and insert 4 AA batteries with correct polarity (+/-) as indicated. (Fig.1)
- 2** Close the battery compartment. (Fig.2)
- 3** Connect your device to the speaker. (Fig.3)
- 4** Slide the switch to turn the speaker on. (Fig.4)  
↳ The LED lights up.
- 5** Adjust the volume and navigate your audio content on your device.
- 6** After use, disconnect your device from the speaker and slide the switch to turn the speaker off.

# 4 Troubleshooting

To keep the warranty valid, never try to repair the system yourself.

If you encounter problems when using the product, check the following points before requesting service. If the problem remains unsolved, register your product and get support at [www.philips.com/welcome](http://www.philips.com/welcome).

- Make sure that the headphone jack is connected correctly.
- Make sure that the batteries are fully charged and inserted correctly.
- Make sure the LED lights up.

## Norge

Typeskilt finnes på apparatens underside.

Observer: Nettbryteren er sekundert innkoplet.

Den innebygde nettdelen er derfor ikke frakoplet nettet så lenge apparatet er tilsluttet nettkontakten.

For å redusere faren for brann eller elektrisk støt, skal apparatet ikke utsettes for regn eller fuktighet.

