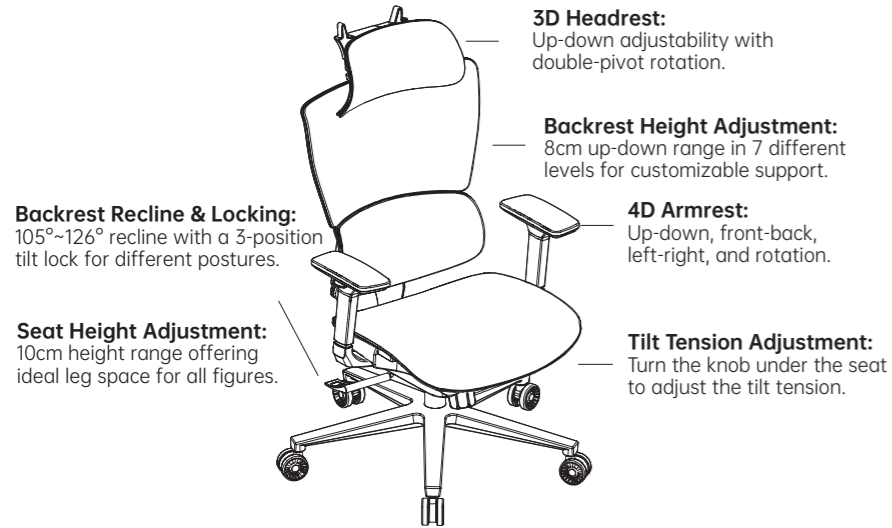


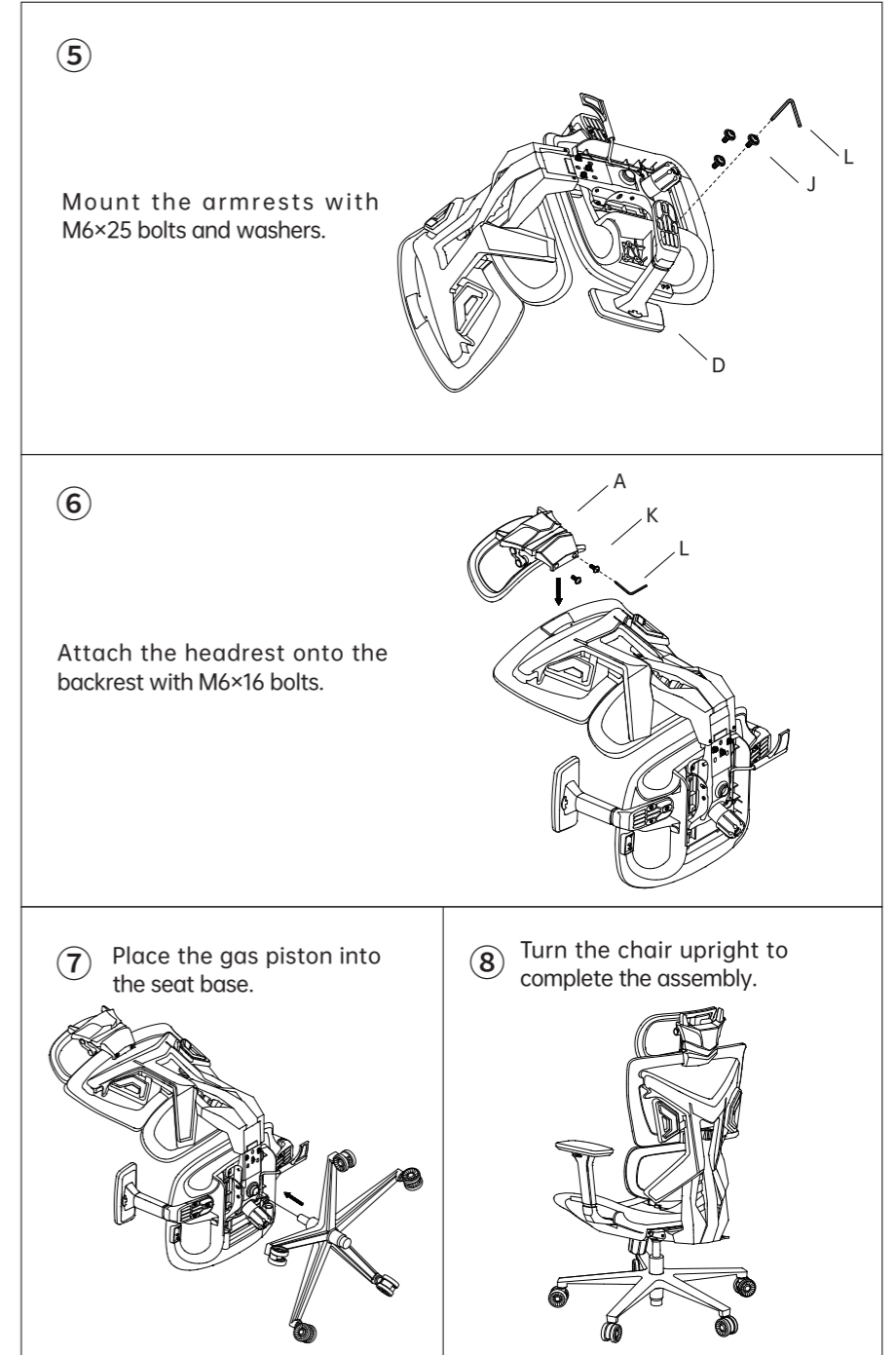
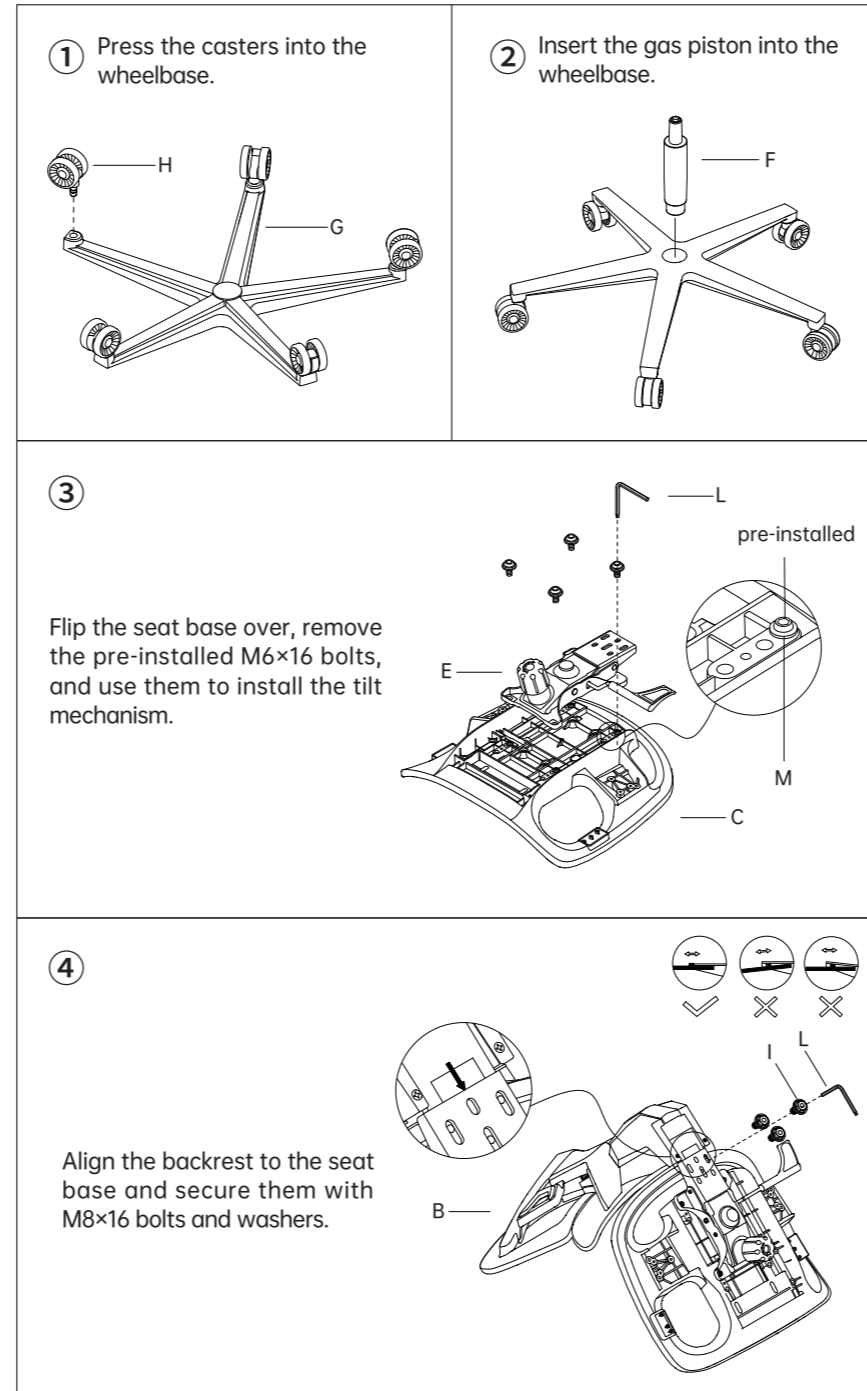
## FEATURES



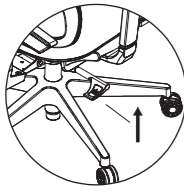
## WHAT'S IN THE BOX

(A) Headrest×1	(B) Backrest×1	(C) Seat Base×1
(D) Armrests×2	(E) Tilt Mechanism×1	(F) Gas Piston×1
(G) Wheelbase×1	(H) Casters×5	(I) M8×16 Bolts & washers×3
(J) M6×25 Bolts & washers×6	(K) M6×16 Bolts×2	(L) M5&M4 Hex Wrench×1

## HOW TO ADJUST

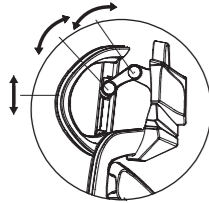


## ☰ HOW TO ADJUST



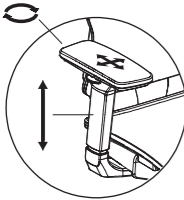
### Seat Height:

Turn the handle under the right side of the seat clockwise to adjust and release it to lock at ideal heights.



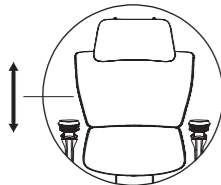
### Headrest:

Hold with both hands to move it up-down or rotate 30° with front pivot and 38° with back pivot.



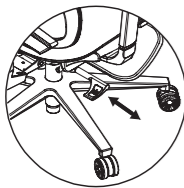
### Armrests:

Hold armrests firmly to rotate or slide front-back and left-right.  
Pull and hold the button under to move to the desired height.



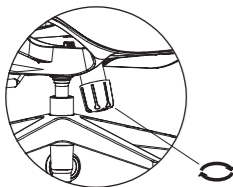
### Backrest Height:

Using both hands, lift the backrest with steady and gradual force. For the lowest height, lift it rapidly to the highest and release.



### Tilt Locking:

Pull the handle located under the right side of the seat outward to adjust the tilt. Lean back to the desired angle, then push the handle inward to lock the tilt position.



### Tilt Tension:

Rotate the knob under the seat clockwise to decrease tilt tension and counterclockwise to increase tilt tension, adjusting it according to your weight.

## ! ASSEMBLY TIPS

1. Closely follow the Assembly Steps and refer to the illustrations for correct assembly.
2. Check every component in the box and confirm they are in working condition.
3. Safety gloves are recommended for assembly.
4. To prevent accidental component damage, assemble on a clean, even surface with a protective layer.
5. To prevent misalignment or uneven tightening, install each bolt halfway, adjust if needed, then fully tighten.
6. The gas piston stays tight in place once it's assembled.

If you need to disassemble the chair and pack it for transportation:

1. Lay it on its side, hold the gas piston firmly, and lightly twitch the seat or tap on its back side with a rubber hammer until it detaches from the gas piston.
2. Then tap on the wheelbase to get it loose from the gas piston.

**Note:** Please take safety precautions during this process. Any damage or safety issue that occurs from it is not covered by this product's warranty.

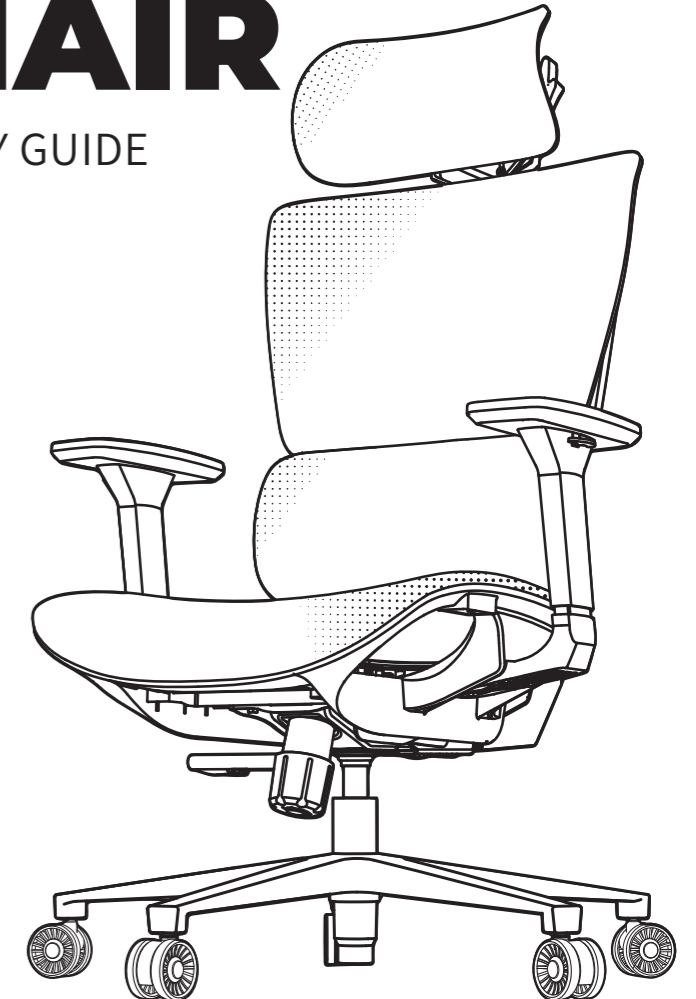
## ! USAGE TIPS

1. This is a single-person chair. Use it with only one person at a time.
2. Ensure all components are securely fastened before use. Inspect bolt tightness every 3 months to maintain safety.
3. Place the chair on a level surface. Avoid prolonged exposure to excessive moisture, heat, or direct sunlight.
4. For seated use only. Do not stand on the chair or sit on its armrests.
5. Clean the chair's surface before your first use. Wipe with a soft cloth only.
6. Avoid cleaners with high acid or alkaline, as they may corrode or damage the chair surface.
7. Use the chair features as shown in the How To Adjust section.
8. While reclining, lean back gradually and keep yourself balanced. Flinging back too hard or too far might cause tipping.
9. Do not take apart the gas piston for safety.

*anda seat*

# X-AIR MESH CHAIR

## ASSEMBLY GUIDE



FOR THE WINNERS' CIRCLE