



USER GUIDE

Gaming

Content Creation

Business & Productivity



USER GUIDE

NOTEBOOK

Content

| | |
|--|------|
| Copyright and Trademarks Notice..... | 1-5 |
| Revision History | 1-5 |
| FCC-B Radio Frequency Interference Statement | 1-6 |
| FCC Conditions | 1-6 |
| CE Conformity | 1-7 |
| Battery Regulations | 1-7 |
| WEEE Statement | 1-7 |
| Chemical Substances Information | 1-8 |
| RoHS Statement | 1-8 |
| Japan JIS C 0950 Material Declaration..... | 1-8 |
| India RoHS | 1-8 |
| Turkey EEE regulation | 1-8 |
| Ukraine restriction of hazardous substances | 1-8 |
| Vietnam RoHS..... | 1-8 |
| Upgrade and Warranty | 1-9 |
| Acquisition of Replaceable Parts..... | 1-9 |
| ENERGY STAR® Statement..... | 1-9 |
| Safety Instructions..... | 1-10 |
| MSI Highlights | 1-13 |

Introductions.....2-1

| | |
|-----------------------------------|------|
| Unpacking | 2-2 |
| Product Overview | 2-3 |
| Top-open View | 2-3 |
| Front Side View | 2-6 |
| Right Side View | 2-7 |
| Left Side View | 2-9 |
| Rear Side View..... | 2-10 |
| Bottom Side View | 2-11 |
| How to Use the Keyboard | 2-12 |
| Windows Key..... | 2-12 |
| Windows Copilot | 2-12 |
| Context Menu Key..... | 2-13 |
| Enable Quick Fn Launch Keys | 2-13 |
| Use Quick Fn Launch Keys..... | 2-13 |
| Screen Capture | 2-14 |

| | |
|---|------------|
| Snip and Sketch | 2-14 |
| Launch Calculator | 2-15 |
| Functions of FN Combination keys | 2-15 |
| Use Multiple Monitors | 2-15 |
| Specifications | 2-16 |
| How to Get Started | 3-1 |
| Begin to Use the Notebook | 3-2 |
| How to Use the Notebook Comfortably | 3-3 |
| How to Manage Power Supply | 3-4 |
| AC Adapter | 3-4 |
| Battery | 3-4 |
| How to Manage Power Supply | 3-6 |
| PD Adapter | 3-6 |
| Battery | 3-6 |
| Power Management through ENERGY STAR® qualified monitors | 3-8 |
| Energy Saving Tips | 3-8 |
| How to Set Up a Power Plan in Windows OS | 3-9 |
| Choose or Customize a Power Plan | 3-9 |
| Create Your Own Power Plan | 3-12 |
| How to Set Up Windows Hello (optional) | 3-13 |
| Create an Account's Password | 3-13 |
| Setting up Windows Hello PIN | 3-15 |
| Setting up Windows Hello Fingerprint | 3-17 |
| Setting up Windows Hello Face | 3-19 |
| How to Use the Touchpad | 3-21 |
| About HDD and SSD | 3-23 |
| About M.2 SSD Slot | 3-23 |
| How to Connect the Internet in Windows OS | 3-24 |
| Wireless LAN | 3-24 |
| Wired LAN | 3-26 |
| How to Set Up Bluetooth Connection in Windows OS | 3-31 |
| Activating Bluetooth Connection | 3-31 |
| How to Connect External Devices | 3-34 |
| How to Use USB Power Share Function (optional) | 3-35 |
| Video: How to Use F3 Recovery on MSI notebook preloaded system (optional) | 3-36 |
| Video: How to Use MSI One Touch Install | 3-37 |

Copyright and Trademarks Notice

Copyright © Micro-Star Int'l Co., Ltd. All rights reserved. The MSI logo used is a registered trademark of Micro-Star Int'l Co., Ltd. All other marks and names mentioned may be trademarks of their respective owners. No warranty as to accuracy or completeness is expressed or implied. MSI reserves the right to make changes to this document without prior notice.



The terms HDMI™, HDMI™ High-Definition Multimedia Interface, HDMI™ Trade dress and the HDMI™ Logos are trademarks or registered trademarks of HDMI™ Licensing Administrator, Inc.

Revision History

- ▶ Version: 1.0
- ▶ Date: 11, 2024

FCC-B Radio Frequency Interference Statement



This equipment has been tested and found to comply with the limits for a Class B digital device, pursuant to part 15 of the FCC rules. These limits are designed to provide reasonable protection against harmful interference in a residential installation.

This equipment generates, uses and radiates radio frequency energy, and, if not installed and used in accordance with the instructions, may cause harmful interference to radio communications. However, there is no guarantee that interference will not occur in a particular installation. If this equipment does cause harmful interference to radio or television reception, which can be determined by turning the equipment off and on, the user is encouraged to try to correct the interference by one or more of the following measures:

- ▶ Reorient or relocate the receiving antenna.
- ▶ Increase the separation between the equipment and receiver.
- ▶ Connect the equipment into an outlet on a circuit different from that to which the receiver is connected.

NOTE

- ▶ The changes or modifications not expressly approved by the party responsible for compliance could void the user's authority to operate the equipment.
- ▶ Shield interface cables and AC power cord, if any, must be used in order to comply with the emission limits.

FCC Conditions

This device complies with part 15 of the FCC Rules. Operation is subject to the following two conditions:

- ▶ This device may not cause harmful interference.
- ▶ This device must accept any interference received, including interference that may cause undesired operation.

CE Conformity



This device is in compliance with the essential safety requirements and other relevant provisions set out in the European Directive.

Battery Regulations



European Union: Batteries, battery packs, and accumulators should not be disposed of as unsorted household waste. Please use the public collection system to return, recycle, or treat them in compliance with the local regulations.



廢電池請回收

BSMI: For better environmental protection, waste batteries should be collected separately for recycling or special disposal.

California, USA: The button cell battery may contain perchlorate material and requires special handling when recycled or disposed of in California.

For further information please visit: <https://dtsc.ca.gov/perchlorate/>

Safety Guideline for Using Lithium Battery

Danger of explosion if battery is incorrectly replaced. Replace only with the same or equivalent type recommended by the equipment manufacturer. Discard used batteries according to manufacturer's instructions.

WEEE Statement



European Union: Under the European Union ("EU") Directive on Waste Electrical and Electronic Equipment, Directive 2002/96/EC, which takes effect on August 13, 2005, products of "electrical and electronic equipment" cannot be discarded as municipal waste anymore and manufacturers of covered electronic equipment will be obligated to take back such products at the end of their useful life.

Chemical Substances Information

In compliance with chemical substances regulations, such as the EU REACH Regulation (Regulation EC No. 1907/2006 of the European Parliament and the Council), MSI provides the information of chemical substances in products at <https://csr.msi.com/global/index>

RoHS Statement

Japan JIS C 0950 Material Declaration

A Japanese regulatory requirement, defined by specification JIS C 0950, mandates that manufacturers provide material declarations for certain categories of electronic products offered for sale after July 1, 2006.

<https://csr.msi.com/global/Japan-JIS-C-0950-Material-Declarations>

<https://csr.msi.com/tw/Japan-JIS-C-0950-Material-Declarations>

India RoHS

This product complies with the "India E-waste (Management and Handling) Rule 2016" and prohibits use of lead, mercury, hexavalent chromium, polybrominated biphenyls or polybrominated diphenyl ethers in concentrations exceeding 0.1 weight % and 0.01 weight % for cadmium, except for the exemptions set in Schedule 2 of the Rule.

Turkey EEE regulation

Conforms to the EEE Regulations of the Republic Of Turkey.

Ukraine restriction of hazardous substances

The equipment complies with requirements of the Technical Regulation, approved by the Resolution of Cabinet of Ministry of Ukraine as of 10 March 2017, № 139, in terms of restrictions for the use of certain dangerous substances in electrical and electronic equipment.

Vietnam RoHS

As from December 1, 2012, all products manufactured by MSI comply with Circular 30/2011/TT-BCT temporarily regulating the permitted limits for a number of hazardous substances in electronic and electric products.

Upgrade and Warranty

Please note that certain components, such as memory modules, HDD, SSD, ODD, and Bluetooth/WiFi combo card, etc., preinstalled in the product may be upgradable or replaceable by user's request depending on the models users purchased.

For any further information on the product users purchased, please contact the local dealer. **Do not attempt to upgrade or replace any component of the product** if users do not understand the component location or how to assembly/disassembly, since it may cause the product to be damaged. **It is recommended that you contact the authorized dealer or service center for product service information.**

Acquisition of Replaceable Parts

Please be noticed that the acquisition of replaceable parts (or compatible ones) of the product users purchased in certain countries or territories may be fulfilled by the manufacturer within 5 years at most since the product has been discontinued, depending on the official regulations declared at the time. Please contact the manufacturer via <http://www.msi.com/support/> for the detailed information about the acquisition of spare parts.

ENERGY STAR® Statement

ENERGY STAR® qualified products and practices help you save money and reduce greenhouse gas emissions by meeting strict energy efficiency guidelines set by the U.S. Environmental Protection Agency (EPA) and the U.S. Department of Energy.

You can help reduce electricity usage and its environmental impact by power managing or turning off your product when it is not in use for extended periods of time, particularly at night and on weekends.

This manual is only applicable for the MS-15Q1/ MS-15Q2/ MS-2611/ MS-2612 bearing with ENERGY STAR® certified logo.

Safety Instructions



Read the safety instructions carefully and thoroughly. All cautions and warnings on the equipment or user's manual should be noted.



- Replacement of a battery with an incorrect type that can defeat a safeguard.
 - Disposal of a battery into fire or a hot oven, or mechanically crushing or cutting of a battery, that can result in an explosion. Leaving a battery in an extremely high temperature surrounding environment that can result in an explosion or the leakage of flammable liquid or gas.
 - A battery subjected to extremely low air pressure that may result in an explosion or the leakage of flammable liquid or gas.
-



- Plug the power cord into an AC outlet that is easily accessible at all times.
 - Disconnect power from the notebook by unplugging the power cord from the AC outlet.
 - If a power cord with 3-prong plug came with the package, always plug the power cord into a grounded (earthed) AC outlet. Do not remove the grounding pin of the power cord, since it is an important safety feature.
 - Always use the AC adapter and power cord approved by MSI, or a compatible one purchased from MSI.
 - Place the power cord in a way that people are unlikely to step on it. Do not place anything on top of the power cord.
-



- Always place the notebook on a stable, flat, hard surface before setting it up.
 - Do not lay the notebook on an unstable surface while using it, such as your lap, bed, pillow, or sofa, etc...
 - Do not cover the ventilators of the notebook to prevent the notebook from overheating.
-



WARNING: Do not ingest battery. If the coin / button cell battery is swallowed, it can cause severe internal burns and can lead to death. Keep new and used batteries away from children.



Keep the notebook away from humidity and high temperature.



Always keep the strong magnetic or electrical objects away from the notebook.



- Do not leave the notebook in an unconditioned environment with a storage temperature above 60°C (140°F) or below 0°C (32°F), which may damage the notebook.
- This notebook should be operated under maximum ambient temperature of 35°C (95°F).



- Never pour liquid into the opening that could damage the equipment or cause an electrical shock.
- Never use any chemical substance to wipe the surface of this equipment, such as keyboard, touchpad, and notebook case.



If any of the following situations arises, get the equipment checked by a service personnel:

- The power cord or plug is damaged.
 - Liquid has penetrated into the equipment.
 - The equipment has been exposed to moisture.
 - The equipment has not worked well or you can not get it work according to User's Manual.
 - The equipment was dropped and damaged.
 - The equipment has obvious signs of breakage.
-

Green Product Features

- Reduced energy consumption during use and stand-by
- Limited use of substances harmful to the environment and health
- Easily dismantled and recycled
- Reduced use of natural resources by encouraging recycling
- Extended product lifetime through easy upgrades
- Reduced solid waste production through take-back policy



Environmental Policy

- The product has been designed to enable proper reuse of parts and recycling and should not be thrown away at its end of life.
 - Users should contact the local authorized point of collection for recycling and disposing of their end-of-life products.
 - Visit the MSI website and locate a nearby distributor for further recycling information.
 - Users may also reach us at gpcontdev@msi.com for information regarding proper disposal, take-back, recycling, and disassembly of MSI products.
-

MSI Highlights

Explore more exclusive features of MSI notebooks for all series, please visit:
<http://www.msi.com> and <https://www.youtube.com/user/MSI>

Features and configurations may vary by models. It is recommended to consult with local retailers for detailed information.



Tutorial: How to Use MSI AI Engine

Utilize AI to learn from your behavior, providing real-time, optimize system adjustments based on the usage Context. MSI AI Engine eliminates the need for you to fiddle with various settings, saving time and effort.



Enhance Your Creativity with MSI Pen

MSI Pen features a customizable remote function for presentation and other application. Let the MSI Pen support your creative work in Microsoft Office or Adobe applications.



How to use SteelSeries Engine 3 on MSI notebooks

MSI collaborates with SteelSeries to develop an exclusive SteelSeries Engine 3 in gaming notebooks. SteelSeries Engine 3 is the Apps to combine frequently used functions for gamers in multiple devices management.



Color Your Life with True Color

MSI has partnered with Portrait Displays, Inc. in developing more accurate, high precision panel quality. MSI True Color Technology guarantees that each panel in a MSI notebook comes with the finest precision in color.



Tutorial: How to use Nahimic

Discover how to use Nahimic and its three features: Nahimic Audio Effects, Microphone Effects and HD Audio recorder.

Introductions

Congratulations on becoming the owner of this notebook, the finely designed notebook. You will have a delightful and professional experience in using this exquisite notebook. We are proud to tell users that this notebook is thoroughly tested and certified by our reputation for unsurpassed dependability and customer satisfaction.

Unpacking

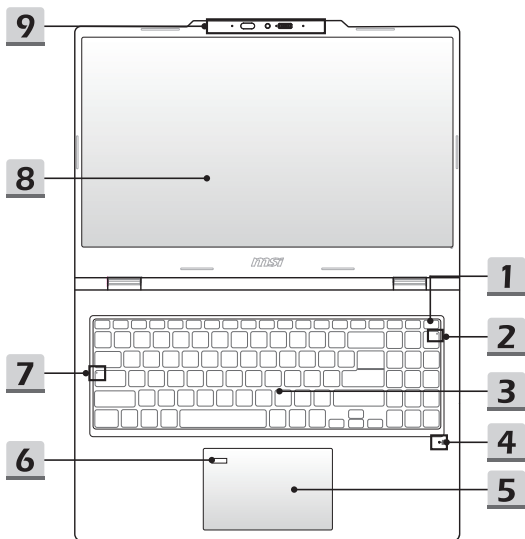
First, unpack the shipping carton and check all items carefully. If any item contained is damaged or missing, please contact your local dealer immediately. Also, keep the box and packing materials in case you need to ship the unit in the future. The package should contain the following items:

- ▶ Notebook
- ▶ Quick Start Guide
- ▶ AC adapter and AC power cord
- ▶ USB-C PD adapter and AC power cord
- ▶ Optional carry bag

Product Overview

This section provides the description of basic aspects of the notebook. It will help you to know more about the appearance of this notebook before using it. Please be aware that the figures shown here are for reference only.

Top-open View



1. Power Key/ Battery Reset



Power Key

- Press this key to turn the notebook power ON.
- While the notebook is turned on, press this key to force the computer into sleep state. Press again to wake up the system from sleep state.
- Long press this key and follow the on-screen instruction to turn the notebook power OFF.

Battery Reset

Whenever the system firmware (EC) is upgraded or the system hangs, please 1) remove the AC power; 2) long press this key for 20 secs and then the LED goes to blink, and after 5 more secs the LED would go off; 3) connect the AC power; 4) power on the notebook.

2. Num Lock LED

Glows when the Num Lock function is activated.

3. Keyboard

The built-in keyboard provides all the functions of a notebook keyboard. Refer to **How to Use the Keyboard** for details.

4. Built-In Spatial Array Microphone

The built-in microphone can be used for spatial voice recording with noise reduction or high quality audio recording.

5. Touchpad

This is the pointing device of the notebook.

6. Fingerprint Sensor (optional)

This notebook may be equipped with a fingerprint sensor, allowing users to set up their own fingerprints to unlock the notebook.

7. Caps Lock LED

Glows when the Caps Lock function is activated.

8. Touch Screen Monitor (optional)

This optionally equipped 10-point multi-touch screen monitor allows users to interact with the notebook by using fingers or stylus.

9. Webcam/ Webcam LED/ Internal Microphone

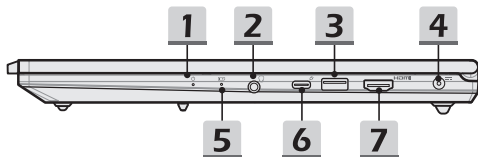
- This built-in webcam can be used for picture taking, video recording or conferencing, and so on.
- Webcam LED indicator, next to the webcam, glows when webcam function is activated; LED goes out when this function is turned off.
- Slide the camera shutter to hide the camera from view, if necessary.
- The built-in microphone shares the same function with an external one.

Front Side View



Blank below

Right Side View



1. Power LED



- Glowing white when the notebook power is turned on.
- LED goes off when the notebook goes to the sleep state.
- LED goes off when the notebook is turned off.

2. Combo Audio Port



- A port for a headset, microphone, or headset with microphone.
- The Combo Audio Port supports 3.5mm headphone jack.

3. USB 5Gbps (USB-A) Port

USB 5Gbps supports high-speed data transfer for the connected devices, such as storage devices, hard drives, or video cameras.

4. Power Connector

This connector is to connect the AC adapter and supply power for the notebook.

5. Battery LED



- LED turns white when the battery is being charged.
- LED turns white and blinks when the battery is in fast charging.
- LED turns amber while the battery is in low capacity status.
- LED turns amber and blinks if the battery fails. If the problem persists, please contact your local authorized retailer or service center.
- Battery LED goes out when the battery is fully charged or when AC adapter is disconnected.

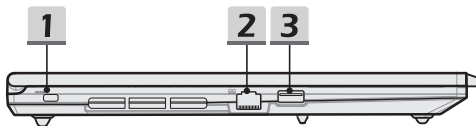
6. USB 10Gbps (USB-C) (PD-in) Port (with DisplayPort function)

- USB 10Gbps delivers high interface speeds for connecting various devices, such as storage devices, hard drives, or video cameras, and offers more advantages over high-speed data transferring.
- Support Power Delivery function with 65~100W power input.
- Optionally support Power Delivery function with 65~100W power input only when the notebook is powered off.
- Support maximum 5V/3A portable charging power output when AC power is connected. However, the maximum portable charging power limitation may be up to 5V/1.5A while only battery DC power is connected.
- The DisplayPort function supports external display connection.
- Support using a power bank to supply power to the notebook and charge the battery pack. Make sure the charging power output of the power bank meets the minimum requirements of the notebook.

7. HDMI™ Connector

HDMI™ (High-Definition Multimedia Interface) technology is the industry-leading interface and de-facto standard connecting high-definition (HD) and ultra high-definition (UHD) equipment.

Left Side View



1. Kensington Lock

This notebook provides a Kensington lock slot, which allows users to secure the notebook in place.

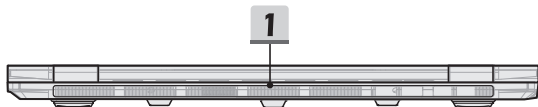
2. RJ-45 Connector

The Ethernet connector, with optionally supported transmitting rate of 10/100/1000 megabits per second, is used to connect a LAN cable for network connection.

3. USB 5Gbps (USB-A) Port

USB 5Gbps supports high-speed data transfer for the connected devices, such as storage devices, hard drives, or video cameras.

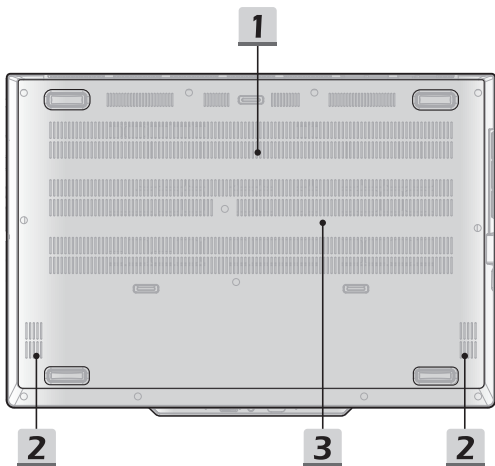
Rear Side View



1. Ventilator

The ventilator is designed to cool the system. DO NOT block the ventilator for air circulation.

Bottom Side View



1. Ventilator

The ventilator is designed to cool the system. DO NOT block the ventilator for air circulation.

2. Stereo Speakers

This notebook may be equipped with built-in stereo speakers which deliver the high quality sound, and supports the HD audio technology.

3. SSD Slot

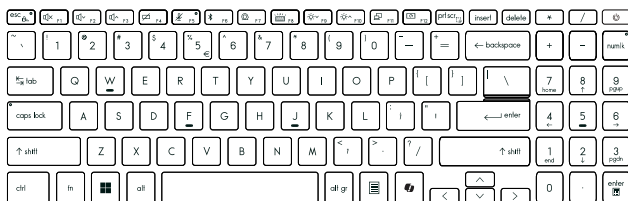
This notebook is equipped with a SSD M.2 slot that supports the SSD device with PCIe interface. Contact the authorized dealer or service center for product service.

How to Use the Keyboard

This notebook provides a full functioned keyboard. To ensure that the keyboard will be functioning properly, it is a must to install the necessary applications before using the keyboard function keys.

Use the FN keys on the keyboard to activate the specific applications or tools. With the help of these keys, users will be able to work more efficiently.

Please be aware that the content shown here is for reference only.



Windows Key



You can find the Windows Logo key on the keyboard which is used to perform Windows-specific functions, such as opening the Start menu and launching the shortcut menu.

Windows Copilot



- Launch **Copilot** application.
 - The key will launch **Windows Search** if **Copilot** is not installed.
-

Context Menu Key



Open context menu

Enable Quick Fn Launch Keys



- This notebook is equipped with a set of Quick FN Launch Keys. Each function key, located on F1 to F12, has a built-in function that is available to use with an easy single press.
 - Users are allowed to enable or disable the Quick FN Launch Keys by pressing FN and ESC keys.
 - Read the FN Lock LED indicator, located on the ESC keycap, to learn the function status.
LED on: Standard FN combination keys enabled.
LED off: Quick FN Launch Keys enabled.
-

Use Quick Fn Launch Keys



Speaker Settings



- F1: Mute the built-in speakers.
 - F2: Decrease the built-in speaker's volume.
 - F3: Increase the built-in speaker's volume.
-



Touchpad

Press to enable or disable the touchpad function.



Microphone Off

- Press to enable or disable the microphone function.
 - The Microphone LED indicator, located on the F5 keycap, glows when the microphone function is disabled.
-



Bluetooth

Open Windows bluetooth setting page.



MSI Center S

- This notebook may be pre-installing with a versatile utility, **MSI Center S**, providing users an astonished and efficient solution in game playing and multitasking.
- Use this key to switch the User Scenario in **MSI Center S**.



Keyboard Backlight LED Settings

Press repeatedly to select a backlight LED level according to your preference.



LCD Settings



- F9: Decrease the LCD brightness.
- F10: Increase the LCD brightness.



Switch Display

Switch the display output mode between the LCD, external monitor and both.



Screen Rotation

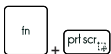
Rotate the screen upside down for 180 degrees. Press again to rotate the screen back to its default position.

Screen Capture



Take a screen capture to the clipboard, and then it can be pasted into an editing program.

Snip and Sketch



Launch Snip & Sketch application.

Launch Calculator



Launch Calculator application.

Functions of FN Combination keys



Break key (optional)

Work as Break key by using both keys.



Battery Boost (optional)

To extend battery life, use both keys to activate Battery Boost while deactivating discrete graphics function.



Pause key

Work as Pause key by using both keys.



Scroll Lock key

Work as Scroll Lock key by using both keys.

Use Multiple Monitors

If users connect an additional monitor to the notebook, the system will automatically detect the external monitor connected. Users will be allowed to customize the display settings.



- Connect the monitor to the notebook.
 - Press and hold the Windows key, and then press [P] key to bring up [Project].
 - Select how you want your display to project on the second screen from the selections of PC screen only, Duplicate, Extend, and Second screen only.
-

Specifications

The specifications listed here is reference only, and may vary and change without notice.

Visit MSI official website at www.msi.com, or contact the local retailers to learn about the details of the product you purchased.

It is always recommended to use an authorized power adapter and a power cord to supply power to the notebook for "full power performance" while performing heavy loading multiple tasks.

| Physical Characteristic | |
|--------------------------|---|
| Dimension | 359.3 (W) x 245.2 (D) x 22.15 (H) mm |
| Weight | 1.9 kg |
| CPU | |
| Package | BGA |
| Mobile Processor | The latest Intel® Ultra Processor Family |
| Memory | |
| Technology | DDR5, 5600 |
| Memory | 2 x SO-DIMM slots |
| Maximum | Up to 96GB |
| Power | |
| AC Adapter (option 1) | 1 x 120W, 20V Input: 100-240V~, 50/60Hz Output: 20V ---, 6A |
| AC Adapter (option 2) | 1 x 90W, 19V Input: 100-240V~, 50/60Hz Output: 19V ---, 4.74A |
| Note | Please use an authorized 100W USB-C PD adapter for fast charging needs. |
| Battery | 4-cell |
| RTC Battery | Yes |
| Storage | |
| SSD | 1 x M.2 2280 NVMe PCIe SSD slot |

| I/O Port | |
|---------------------------|---|
| USB | 2 x USB 5Gbps (USB-A) <ul style="list-style-type: none"> • Power Share function is optionally supported |
| USB | 1 x USB 10Gbps (USB-C) (with DisplayPort funtion/ PD-in) <ul style="list-style-type: none"> • Support maximum 5V/3A portable charging power output when AC power is connected. • Support maximum 5V/1.5A portable charging power output when DC power is connected. • Power Delivery function may be optionally supported. Choose either way to use Power Delivery function to supply power for the notebook <ol style="list-style-type: none"> (1) connect a 65~100W USB-C PD adapter. (2) connect a power bank that meets the minimum requirements. |
| Audio | 1 x Mic-in/ Headphone-out combo |
| Video | 1 x HDMI™ |
| LAN | 1 x RJ-45 |
| Communication Port | |
| LAN | Supported |
| Wireless LAN | Supported |
| Bluetooth | Supported |
| Display | |
| LCD Type (optional) | 15.6" FHD+ LED/ QHD OLED panel 16" FHD+ LED/ QHD+ OLED panel |
| Touch Screen | 10-point multi-touch screen monitor is optionnly supported |
| Video | |
| Graphics (optional) | <ul style="list-style-type: none"> • NVIDIA® GeForce RTX™ discrete graphics with NVIDIA® Optimus™ supported • The latest Intel® integrated graphics |
| Graphics (optional) | <ul style="list-style-type: none"> • The latest Intel® integrated graphics |
| Graphics (optional) | <ul style="list-style-type: none"> • Intel® Arc™ discrete graphics • The latest Intel® integrated graphics |
| VRAM | GDDR6, based on GPU structure |

Introductions

Webcam

| | |
|------|----------------|
| Type | Digital camera |
|------|----------------|

| | |
|-----------------------|---------|
| Resolution (optional) | FHD/ HD |
|-----------------------|---------|

Audio

| | |
|-------------------|---------------------|
| Internal Speakers | 2 x stereo speakers |
|-------------------|---------------------|

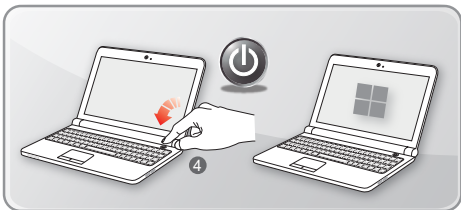
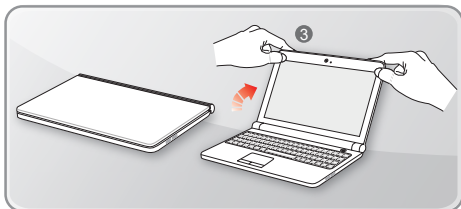
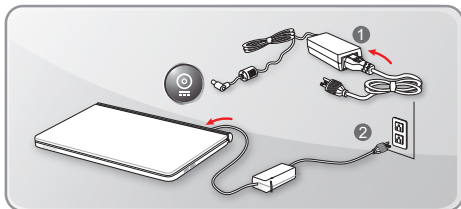
Security

| | |
|--|--|
| Trusted Platform Module (optional) | <p>TPM 2.0 is a hardware-based encryption device that collaborates with software measures to form a more advanced and secure data protection.</p> <p>TPM functionalities can be de/activated in BIOS settings where appropriate.</p> <p>With professional versions of Windows, BitLocker is the default console available for TPM communications serving data encryption purposes.</p> |
|--|--|

How to Get Started

Begin to Use the Notebook

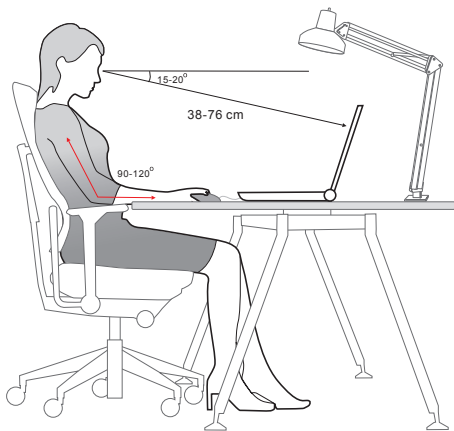
For a new user of this notebook, we would like to suggest you follow the illustrations below to begin to use the notebook.



How to Use the Notebook Comfortably

If you are a beginner to the notebook, please read the following instructions to assure your own safety, and make yourself comfortable during the operations.

- ▶ Good illumination is essential in the work area.
 - ▶ Choose a chair and desk with good ergonomics and adjust their heights according to your posture.
 - ▶ Adjust the backrest to support your lower back comfortably when you are sitting upright.
 - ▶ Place your feet flat on the floor with your knees bent to a 90 degrees.
 - ▶ Adjust the angle/position of the LCD panel to have an optimal view.
 - ▶ Stretch and relax your body regularly. Always take a break after working for a period of time.
-



How to Manage Power Supply

This section provides users basic safety precautions to take when using an AC adapter and battery power properly.

AC Adapter

Ensure that your notebook is connected to an AC power source via the AC adapter before turning it on for the first time. If the notebook automatically shuts down due to low battery power, it is likely to cause system failure. Below are some Dos and Don'ts of an AC adapter.

- ▶ **Dos**
 - Use the adapter that shipped with your notebook only.
 - Always be aware of heat coming from the in use AC adapter.
 - Unplug the AC power cord before disassembly the notebook.
- ▶ **Don'ts**
 - Cover an in-use adapter since it can generate heat.
 - Have the AC power cord plugged after powering off the system when the notebook is going to be left unused for a longer time.

Battery

When you get a new notebook or a new notebook battery, it is important to know how to charge and care for your battery in order to get the most out of it for as long as you can.

Be aware of that the battery may not be replaced by users.

- ▶ **Safety guidelines**
 - This notebook is equipped with a non-removable battery, follow the local regulations while discarding the notebook.
 - Always keep the notebook and its battery away from excessive moisture and extreme temperatures.
 - Always unplug the AC power cord before installing any module to the notebook.

► **Battery type**

- This notebook may be equipped with a high-capacity Li-ion or Li-polymer battery pack depending on the model you have.
- The rechargeable battery pack is an internal power source of the notebook.

► **Battery charging behavior**

To optimize battery life and avoid a sudden power loss, read the tips below:

- Suspend system operation if the system will be idle for a while or shorten the suspend timer's time period.
- Turn off the system if you won't be using it for a period of time.
- Disable unnecessary settings or remove idle peripherals.
- Connect an AC adapter to the system whenever possible.

► **How to charge the battery properly**

Please pay attention to the following tips before recharging the battery:

- If a charged battery pack is not available, save your work and close all running programs and shut down the system.
- Plug in an AC adapter.
- You can use the system, suspend system operation or shut down and turn off the system without interrupting the charging process.
- The Li-ion or Li-polymer battery has no memory effect. It is unnecessary to discharge the battery before recharging. However, to optimize the life of battery, we suggest that consuming the battery power completely once a month is necessary.
- The actual charging time will be determined by the applications in use.

How to Manage Power Supply

This section provides users basic safety precautions to take when using an PD adapter and battery power properly.

PD Adapter

Ensure that your notebook is connected to an AC power source via the PD adapter before turning it on for the first time. If the notebook automatically shuts down due to low battery power, it is likely to cause system failure. Below are some Dos and Don'ts of an PD adapter.

- ▶ **Dos**
 - Use the adapter that shipped with your notebook only.
 - Always be aware of heat coming from the in use PD adapter.
 - Unplug the AC power cord before disassembly the notebook.
- ▶ **Don'ts**
 - Cover an in-use adapter since it can generate heat.
 - Have the AC power cord plugged after powering off the system when the notebook is going to be left unused for a longer time.

Battery

When you get a new notebook or a new notebook battery, it is important to know how to charge and care for your battery in order to get the most out it for as long as you can.

Be aware of that the battery may not be replaced by users.

- ▶ **Safety guidelines**
 - This notebook is equipped with a non-removable battery, follow the local regulations while discarding the notebook.
 - Always keep the notebook and its battery away from excessive moisture and extreme temperatures.
 - Always unplug the AC power cord before installing any module to the notebook.
 -

► **Battery type**

- This notebook may be equipped with a high-capacity Li-ion or Li-polymer battery pack depending on the model you have.
- The rechargeable battery pack is an internal power source of the notebook.

► **Battery charging behavior**

To optimize battery life and avoid a sudden power loss, read the tips below:

- Suspend system operation if the system will be idle for a while or shorten the suspend timer's time period.
- Turn off the system if you won't be using it for a period of time.
- Disable unnecessary settings or remove idle peripherals.
- Connect an PD adapter to the system whenever possible.

► **How to charge the battery properly**

Please pay attention to the following tips before recharging the battery:

- If a charged battery pack is not available, save your work and close all running programs and shut down the system.
- Plug in an PD adapter.
- You can use the system, suspend system operation or shut down and turn off the system without interrupting the charging process.
- The Li-ion or Li-polymer battery has no memory effect. It is unnecessary to discharge the battery before recharging. However, to optimize the life of battery, we suggest that consuming the battery power completely once a month is necessary.
- The actual charging time will be determined by the applications in use.

Power Management through ENERGY STAR® qualified monitors

The power management feature allows the notebook to initiate a lower-power or “Sleep” mode after a period of user inactivity. To take advantage of these potential energy savings, the power management feature has been preset to behave in the following ways when the system is operating on AC power:

- ▶ Turn off the display after 5 minutes
- ▶ Initiate Sleep after 10 minutes

The notebook exits Sleep when the power/Sleep button is pressed. When the Wake On LAN (WOL) feature is enabled, the notebook can also exit Sleep in response to a network signal.

Energy Saving Tips

When you get a new notebook or a new notebook battery, it is important to know how to charge and care for your battery in order to get the most out of it for as long as you can.

Be aware of that the battery may not be replaced by users.

- ▶ Activate the ECO power saving function to manage the computer's energy consumption.
- ▶ Turn off the monitor after a period of user inactivity.
- ▶ Go to Windows icon, and select Sleep to turn into power saving mode.
- ▶ Tune the settings in Power Options under Windows OS to optimize the computer's power management.
- ▶ Always disconnect the AC power cord or uninstall the battery pack or switch off the wall socket if the notebook would be left unused for a certain time to achieve zero energy consumption.

How to Set Up a Power Plan in Windows OS

* For selected models with Windows 11 operating system installed.

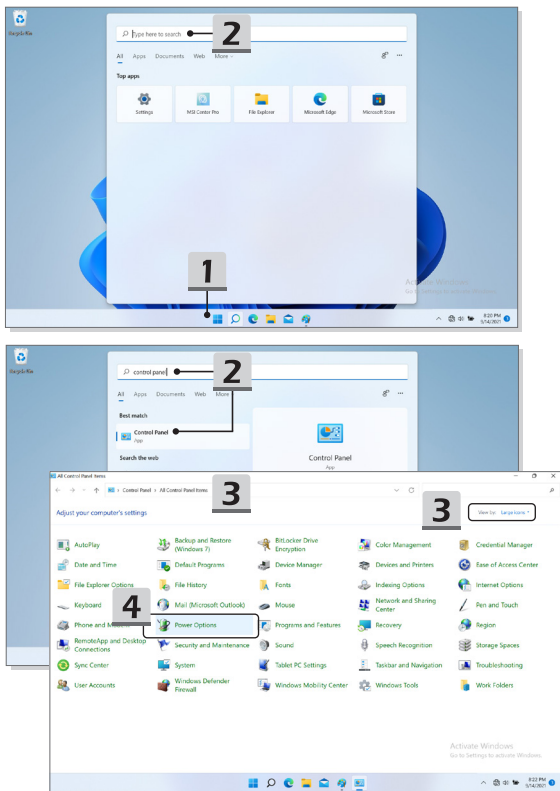
A power plan is a collection of hardware and system settings that manages how your computer uses and conserves power. Power plans can save energy, maximize system performance, or balance energy conservation with performance. The default power plans — Balanced and Power saver — meet most people's needs. But you can modify settings for existing plans or create your own plan.

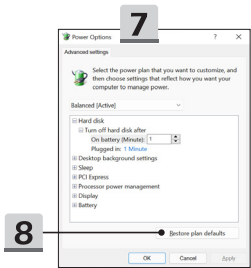
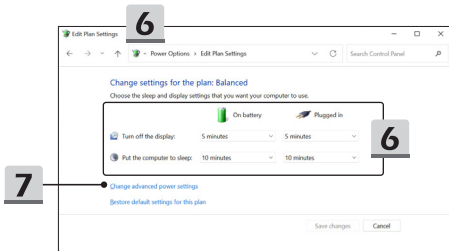
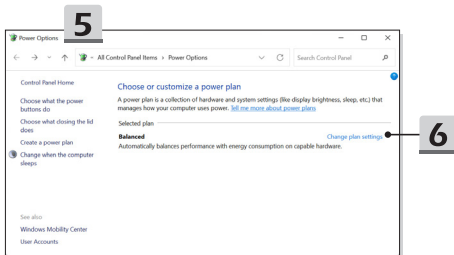
The figures shown here are for reference only, they may be varied depending on the different version of Windows operating system installed.

Choose or Customize a Power Plan

1. Go to [Start] and then move the mouse cursor to [Type here to search] field.
2. Keyin [control panel] and then select [Control Panel] to continue.
3. Open up [All Control Panel Items] window. Select [Large icons] under [View by] drop-down menu.
4. Select [Power Options] to continue.
5. Within [Power Options] window, the Power Plan of [Balanced] is selected as an example here. Click on the [Change plan settings] to bring out [Edit Plan Settings] to customize a power plan.
6. Change settings for the plan selected in [Edit Plan Settings].
7. Click on [Change advanced power settings] to bring out [Power Options]. Make advanced changes here to the selected power plan to meet your needs.
8. To restore the selected power plan back to its default settings, click on [Restore plan defaults].
9. Follow the on-screen instructions to finish the configurations.

How to Get Started

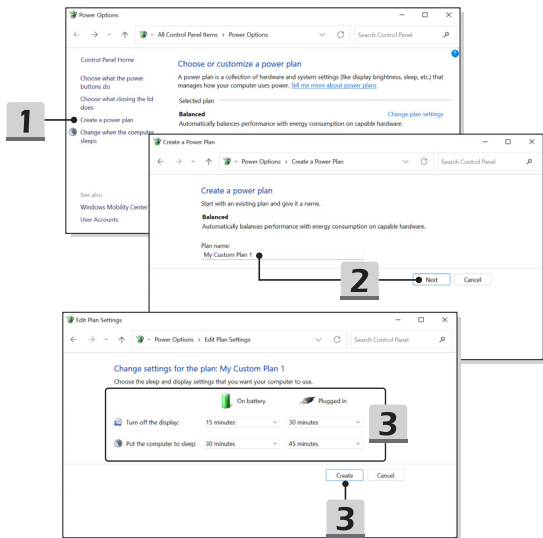




Create Your Own Power Plan

You are allowed to create your own Power Plan and customize it to meet personal requirements.

1. Click [Create a power plan] in [Power Options].
 2. Start with an existing plan and give the new power plan a name. Click [Next] to continue.
 3. Change the settings for the plan. Click [Create] to make the customized power plan taking effect.
 4. Now you have a new power plan that is automatically set as active.
-



How to Set Up Windows Hello (optional)

Windows Hello is a more secure, personal way to get an instant access to your Windows operating system using fingerprint or facial recognition. The feature requires fingerprint reader or a infrared camera that supports it. Once you're set up, you'll be able to sign in with a quick swipe or glance.

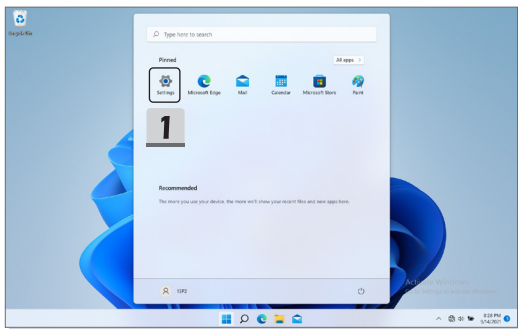
Follow the instructions below to setup your Windows Hello Logins - Face, Fingerprint, and PIN.

The figures shown here are for reference only, they may be vary depending on the different version of Windows operating system installed.

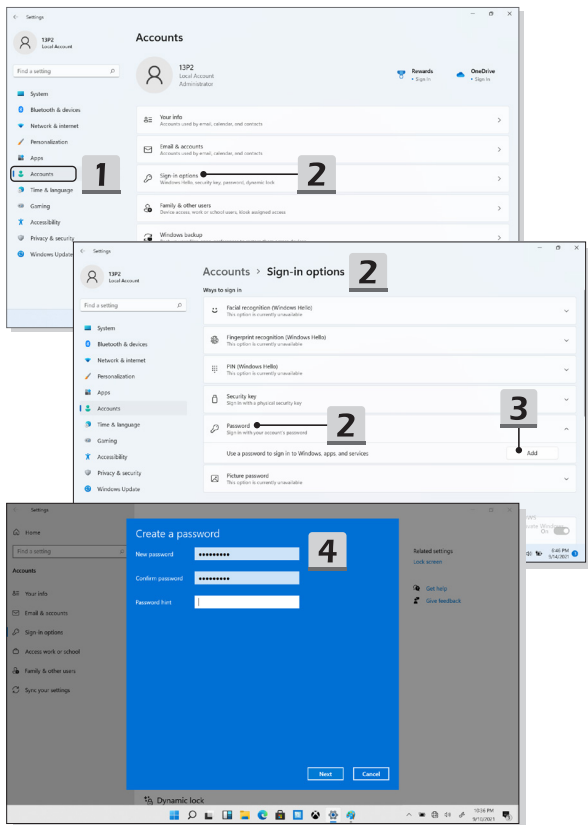
Create an Account's Password

Before setting up Windows Hello, it is required to setup the account's password.

1. Go to [Start > Settings] and locate [Accounts].
 2. In [Sign-in options], click [Password].
 3. Under [Password], click [Add] to continue.
 4. Follow the on-screen instructions to create a new password for your account, and then click [Finish] to close.
-



How to Get Started

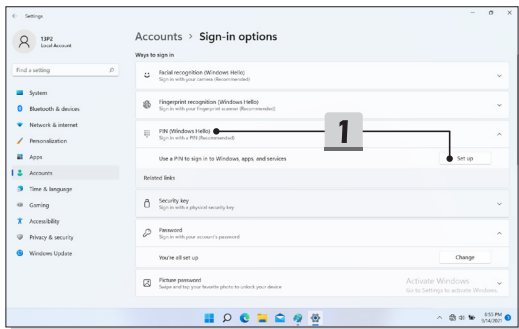


Setting up Windows Hello PIN

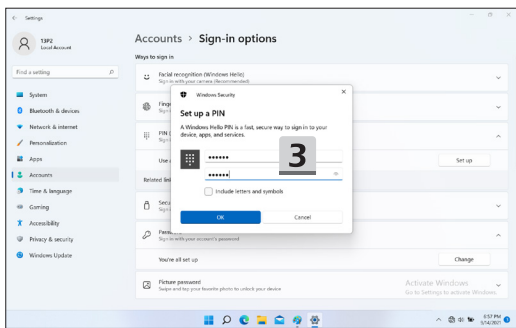
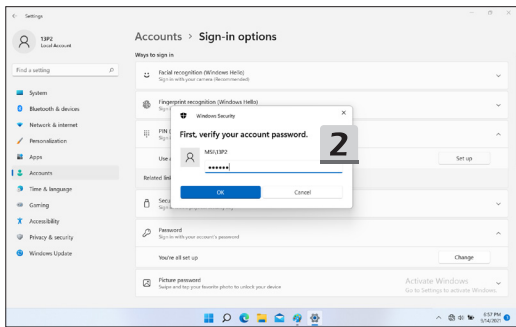
A Windows Hello PIN is a fast, secure way to sign in to your device, apps and services.

The figures shown here are for reference only, they may be varied from the actual ones.

1. Select [PIN (Windows Hello)], and then click [Set up] to continue.
 2. Verify your account's password first
 3. Set up your Windows Hello PIN. Click [OK] to close.
-



How to Get Started

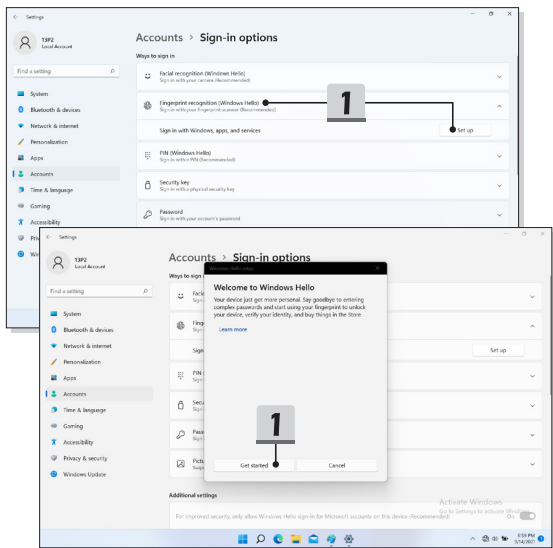


Setting up Windows Hello Fingerprint

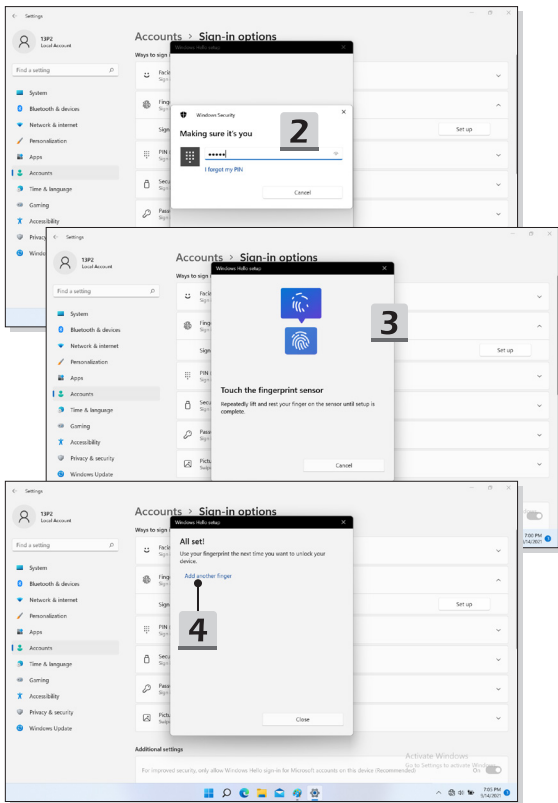
* For selected models only

Time to say goodbye to entering complex passwords and start using your fingerprint to unlock your device and verify your identity.

1. Select [Fingerprint Recognition (Windows Hello)], click [Set up] to open up the Windows Hello setup wizard, and then click [Get Started] to continue.
 2. Verify your Windows Hello PIN.
 3. Place your preferred finger on the fingerprint sensor. You will be asked to swipe the same finger for a few times to setup Windows Hello.
 4. Click [Add Another] if you want to repeat the process with another finger.
-



How to Get Started

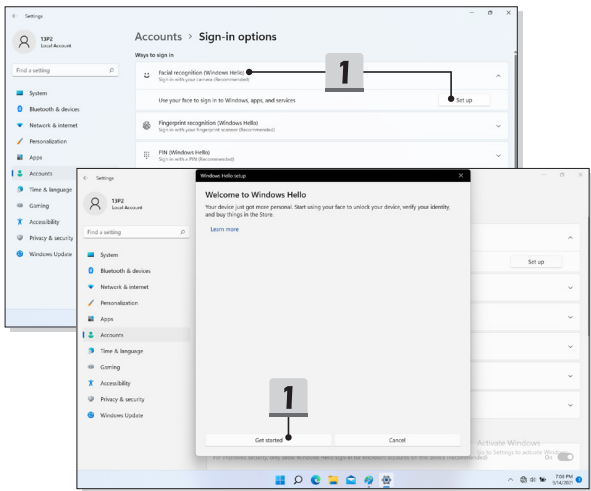


Setting up Windows Hello Face

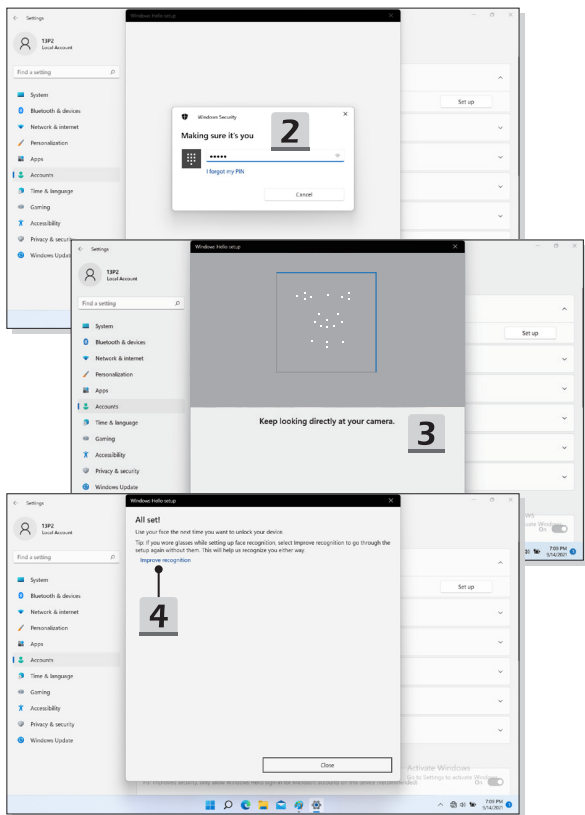
* For selected models only

Your device just got more personal. Start using your face to unlock your device and verify your identity.

1. Select [Facial Recognition (Windows Hello)], click [Set up] to open up the Windows Hello setup wizard, and then click [Get Started] to continue.
 2. Verify your Windows Hello PIN.
 3. Position your face in the center of the frame that appears on screen. The camera will register your face.
 4. Complete the setup. If you wore glasses while setting up face recognition, click [Improve recognition] to go through the setup again without them. This will help the system recognize you either way. Click [Remove] to cancel the facial login setup.
-

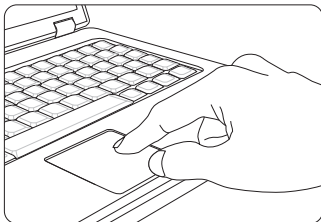


How to Get Started



How to Use the Touchpad

The touchpad integrated in your notebook is a pointing device that is compatible with standard mouse, allowing you to control the notebook by pointing the location of the cursor on the screen.



- **Configure the Touchpad**

You can customize the pointing device to meet your personal needs. For example, if you are a left-handed user, you may want to swap the functions of the two buttons. In addition, you can change the size, shape, moving speed and other advanced features of the cursor on the screen.

To configure the touchpad, you can use the standard Microsoft or IBM PS/2 driver in your Windows operating system. The Mouse Properties in Control Panel allows you to change the configuration.

- **Position and Move**

Place your finger on the touchpad (usually using the forefinger), and the rectangular pad will act as a miniature duplicate of your display. When you move your fingertip across the pad, the cursor on the screen will move simultaneously to the same direction. When your finger reaches the edge of the pad, lift your finger and place it on a proper location of the touchpad to continue the movement.

How to Get Started

- ▶ Point and Click

When you have moved and placed the cursor over an icon, a menu item or a command that you want to execute, simply tap slightly on the touchpad or press the left button to select. This procedure, called as point and click is the basics of operating your notebook. Unlike the traditional pointing device such as the mouse, the whole touchpad can act as a left button, so that your each tap on the touchpad is equivalent to pressing the left button. Tapping twice more rapidly on the touchpad is to execute a double-click.

- ▶ Drag and Drop

You can move files or objects in your notebook by using drag-and-drop. To do so, place the cursor on the desired item and slightly tap twice on the touchpad, and then keep your fingertip in contact with the touchpad on the second tap. Now, you can drag the selected item to the desired location by moving your finger on the touchpad, and then lift your finger from the touchpad to drop the item into place. Alternately, you can press and hold the left button when you select an item, and then move your finger to the desired location; finally, release the left button to finish the drag-and-drop operation.

About HDD and SSD

This notebook may be equipped with hard disk drive (HDD) or solid state drive (SSD) depending on the models users purchased.

The hard disk drive and solid state drive are the data storage devices used for storing and retrieving digital information. Most SSDs use NAND-based flash memory, and have higher data transfer rates, lower power consumption, and faster read/write speed than HDDs.

Do not attempt to remove or install the HDD and SSD when the notebook is powered on. Please consult an authorized retailer or service center for the replacement of the HDDs and SSDs.

About M.2 SSD Slot

The notebook may be equipped with M.2 SSD slots for M.2 SSD cards, which are compatible with SATA or PCIe interfaces, providing diverse features and usages to users. Consult an authorized retailer or service center for correct specifications and installations.

How to Connect the Internet in Windows OS

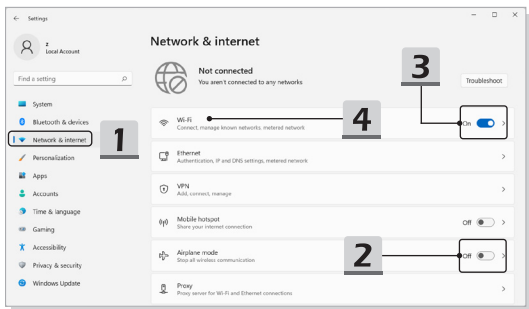
* For selected models with Windows 11 operating system installed.

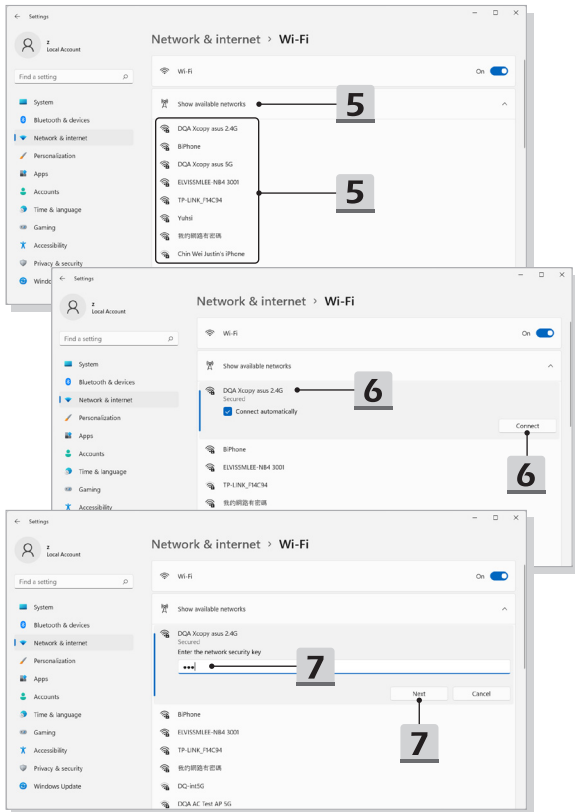
The figures shown here are for reference only, they may be varied depending on the different version of Windows operating system installed.

Wireless LAN

Wireless LAN is a wireless broadband connection that allows you to connect to the Internet without using any cables. Follow the instructions as below to set up a Wireless LAN connection.

1. Open up [Settings], find and click [Network & internet].
2. Make sure [Airplane mode] is turn off.
3. Switch [ON] the Wi-Fi function if it is set to [Off].
4. Select [Wi-Fi] within the [Network & internet] selection menu.
5. Select [Show available networks] to open up the network list. (The available networks shown here are for reference only, and the actual ones may vary on the situation.)
6. Choose one Wireless LAN network from the network list to connect to the Internet. Click [Connect] to continue.
7. A security key may be required for connecting the selected network. Then click [Next].

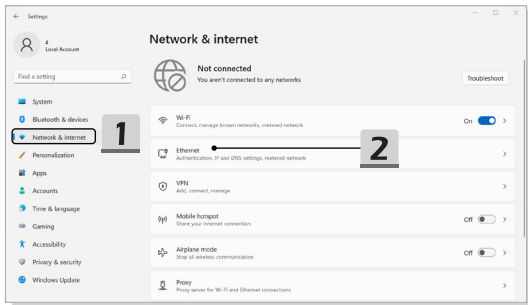


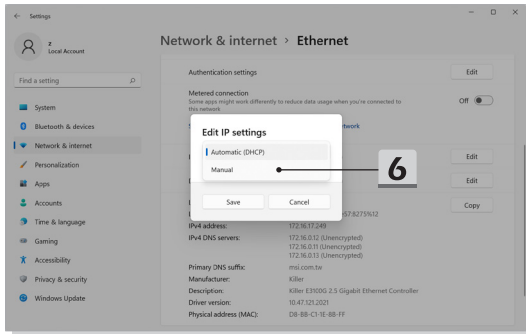
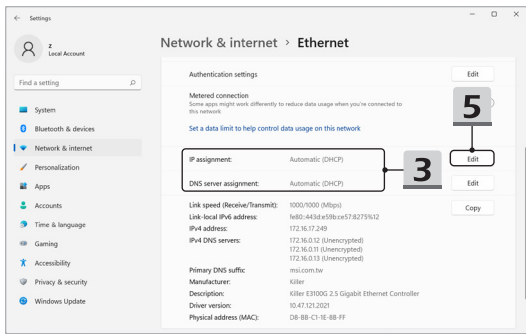


Wired LAN

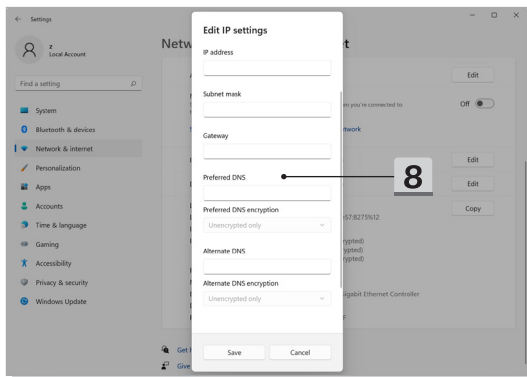
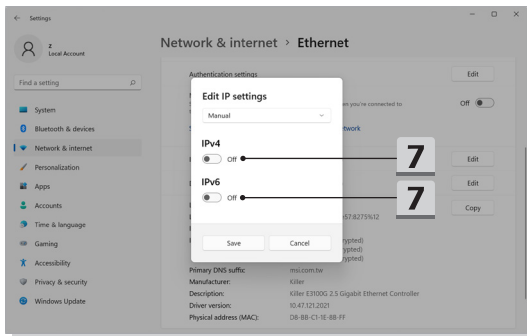
Use cables to connect to the Internet. Before setting up the connection of Dynamic IP/ PPPoE or Broadband (PPPoE) or Static IP, contact your Internet Service Provider (ISP) or network administrator for assistance of setting up Internet connection.

- ▶ Dynamic IP/PPPoE Connection
 1. Open up [Settings], find and click [Network & internet].
 2. Select [Ethernet] within the [Network & internet] selection menu.
 3. The [IP assignment] and [DNS server assignment] are automatically set as [Automatic (DHCP)].
 - ▶ Static IP Connection
 4. Follow the previous steps 1 to 2 to continue.
 5. Click [Edit] of [IP assignment].
 6. Select [Manual].
 7. Switch the [IPv4] or [IPv6] on. (Contact your Internet Service Provider or network administrator for assistance of the configurations.)
 8. Fill the IP address, Subnet mask, Gateway, Preferred DNS, and Alternate DNS. Then click [Save].
-



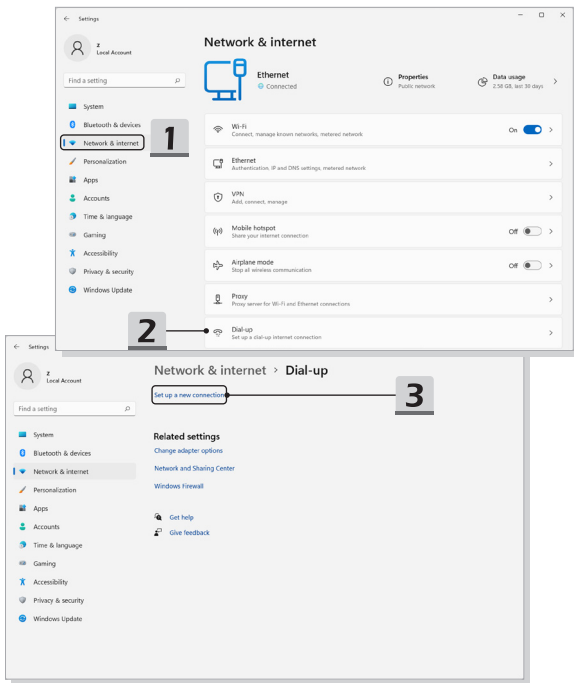


How to Get Started



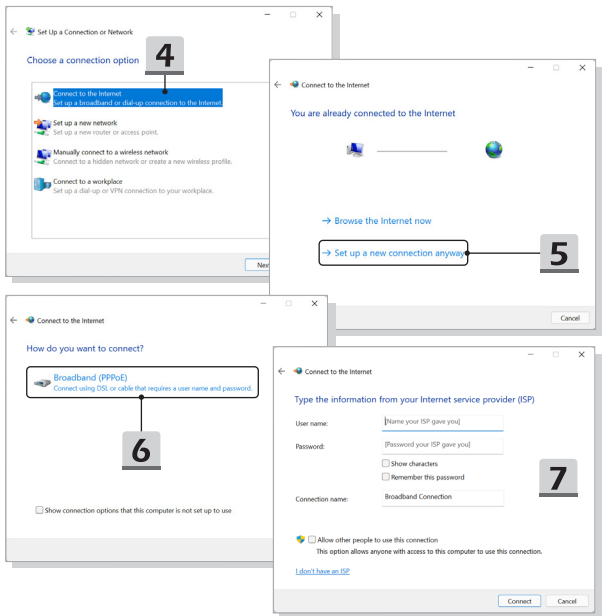
► Broadband (PPPoE) Connection

1. Open up [Settings], find and click [Network & internet].
2. Select [Dial-up] within the [Network & internet] selection menu.
3. Select [Set up a new connection].



How to Get Started

4. Select [Connect to the Internet] under [Choose a connection option], and then click [Next].
 5. Select [Set up a new connection anyway].
 6. Click [Broadband (PPPoE)].
 7. Fill User name, Password, and Connection name fields. Then click [Connect].
-



How to Set Up Bluetooth Connection in Windows OS

* For selected models with Windows 11 operating system installed.

Bluetooth pairing is a process in which two Bluetooth devices communicate with each other through an established connection.

The figures shown here are for reference only, they may be vary depending on the different version of Windows operating system installed.

Activating Bluetooth Connection

- ▶ Checking the Bluetooth status

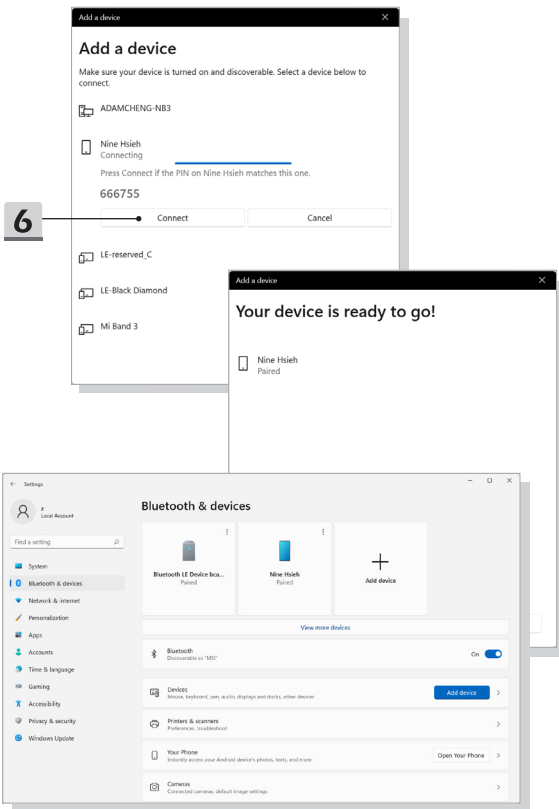
Before setting up a Bluetooth connection, it is a must to make sure that Airplane mode is turned off.

1. Open up [Settings], find and click [Bluetooth & devices].
2. Switch [ON] the Bluetooth function if it is set to [Off].

- ▶ Pairing the Bluetooth devices

3. Click [Add device].
4. Select [Bluetooth].
5. Choose and select a device to start pairing.
6. Give the passcode as instructed by the device waiting to be connected, and then click on [Connect] to continue and complete pairing.

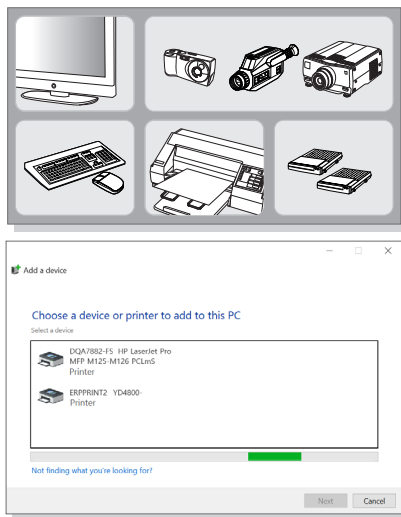
How to Get Started



How to Connect External Devices

This notebook may be equipped with various connecting I/O (input/output) ports, such as USB, HDMI™, DisplayPort, and mini DisplayPort. Users will be able to connect diverse peripheral devices to the notebook.

To connect these devices, refer to the instruction manuals of each device first, and then connect the device to the notebook. This notebook is capable to auto detect the connected devices, and if there is no detection of the devices, please manually enable the devices by going to [Start Menu/ Windows System/ Control Panel/ Hardware and Sound/ Add a device] to add the new devices.



How to Use USB Power Share Function (optional)

This notebook may be optionally supported USB Power Share function via Type-A USB ports, providing portable charging power output for various USB devices, such as mobile phones and power banks, while the notebook is in hibernation and shutdown status.

It is always suggested to use the official authorized cable to perform this function.

1. USB Power Share function will only be available in AC mode under default settings; therefore, it is a must to connect AC power to the notebook before using this function.
2. Users are also allowed to enable using this function under AC or DC mode in BIOS settings; however, as AC/ DC mode is enabled, it may affect the battery life more or less.
3. USB Power Share function supports selected models only, and the figures shown here are for reference only.

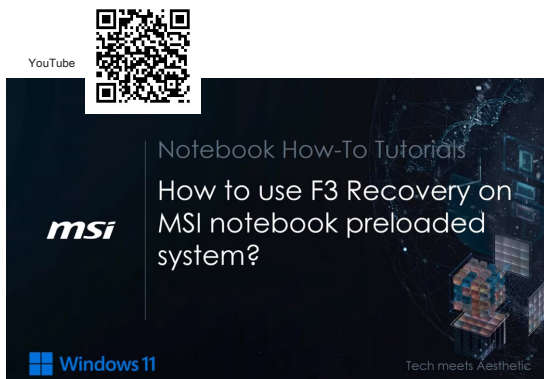


2

Video: How to Use F3 Recovery on MSI notebook preloaded system (optional)

* For selected models with Windows 11 operating system installed.

Watch the instruction video at: <https://www.youtube.com/watch?v=caSZR08b2fc>, to restore the operating system when it is needed.



Video: How to Use MSI One Touch Install

* For selected models with Windows 11 operating system installed.

MSI “**One Touch Install**”, the one-click installer application, allows users to efficiently install all needed drivers on MSI notebooks with single click.

Watch the instruction video at: <https://www.youtube.com/watch?v=37NWEaA9H5E&t=4s>





MSI.COM



SUPPORT



SOCIAL MEDIA