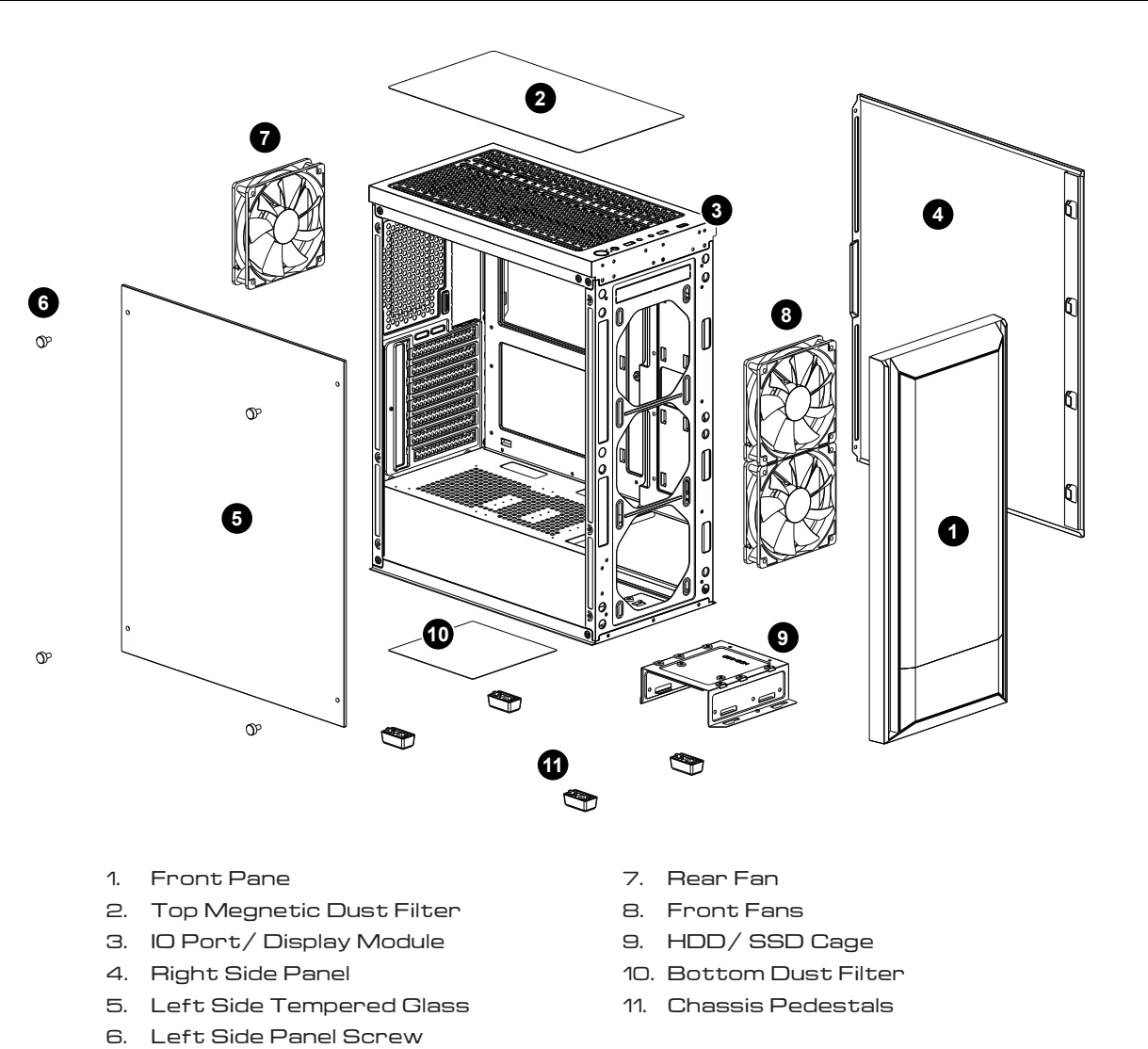
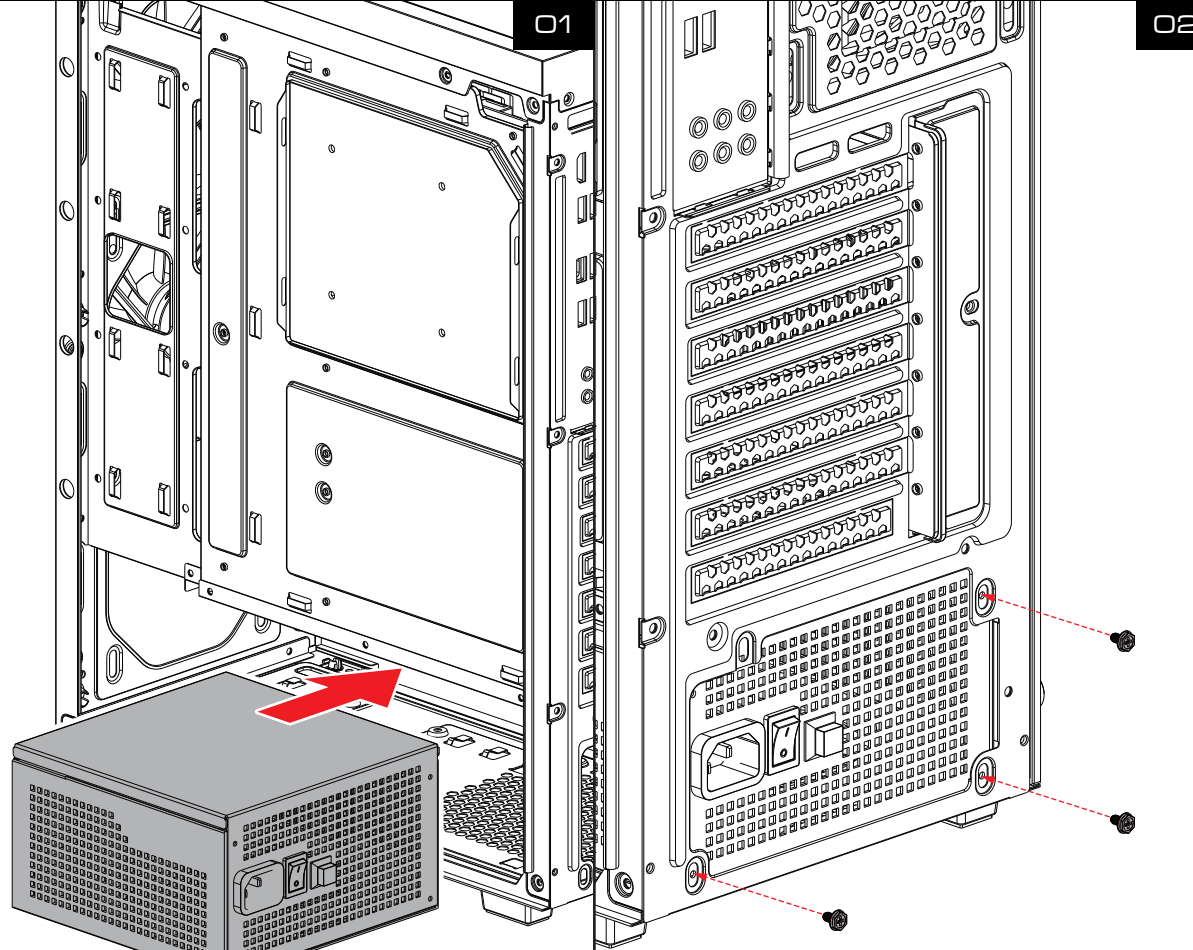


# AURA GC6 ELITE ARGB MID-Tower PC Case

## ▼ Case Layout and Parts Identification



## ▼ Power Supply Unit (PSU) Installation



## ▼ Safety Information

1. General Safety Warnings

Always ensure the computer case is placed on a stable, flat surface to prevent it from tipping over.  
Keep the case away from water, moisture, or high humidity environments to avoid electrical hazards.  
Do not block or obstruct the ventilation openings to ensure proper airflow and prevent overheating.
2. Electrical Safety

Disconnect the power supply before installing or modifying any internal components.  
Avoid touching internal components directly; always ground yourself to prevent static discharge, which can damage sensitive components.  
Use only compatible power supplies and cables, ensuring that all connections are secure and free from fraying or damage.
3. Handling Precautions

Handle the computer case with care during transportation to prevent physical damage.  
Use appropriate tools when assembling or disassembling components inside the case to avoid injury.  
Do not force components into place; ensure they align properly before securing them.
4. Fire Hazard Warnings

Ensure all components are properly ventilated and not overheating, as this can be a potential fire hazard.  
Avoid overloading electrical circuits connected to the computer case to prevent overheating and potential fire risks.  
Keep flammable materials away from the computer case.
5. Child Safety

Keep the computer case and its components out of reach of children.  
Do not allow children to play with or operate the computer case, especially when it is powered on.
6. Cleaning and Maintenance

Unplug the computer case from the power source before cleaning.  
Use a dry, soft cloth for cleaning the exterior of the case. Do not use liquid cleaners or aerosols.  
Periodically check and clean the ventilation openings to ensure proper airflow.
7. Installation Safety

Ensure that all components are installed correctly and securely before powering on the system.  
Double-check connections and screws to prevent potential hazards during operation.  
Follow the manufacturer's guidelines for component installation and ensure compatibility with the case.
8. Disposal Instructions

Dispose of the computer case and its components according to local electronic waste regulations.

## ▼ Package Contents

1. Gaming Case : AURA GC6 ELITE ARGB

2. Chassis Protection : EPS Protection Foam

3. Chassis Dust Cover

4. Preinstalled Fans : GAMDIAS ARGB Fans x 3

5. Accessory Box : Screws and Standoffs
- A. Motherboard/ SSD screws (18)

B. Motherboard additional standoffs (3)

C. PSU/ GPU PCIe screws (6)

D. HDD cage screws (9)

E. Cable ties (5)

## ▼ Specification

1. Case Type: MID Tower

2. Motherboard Support: E-ATX, ATX, Micro-ATX, Mini-ITX

3. Expansion Slots: 7

4. Material: SPCC, ABS, Tempered Glass, Wood

5. Product Dimension : 390 x 195x 468 mm(15.35 x 7.68 x 18.43 inch)

6. Chassis Dimension : 350 x 195 x 450 mm(13.78 x 7.68 x 17.72 inch)

7. Radiator Support : Front:360 mm Rear:120 mm Top: 240 mm

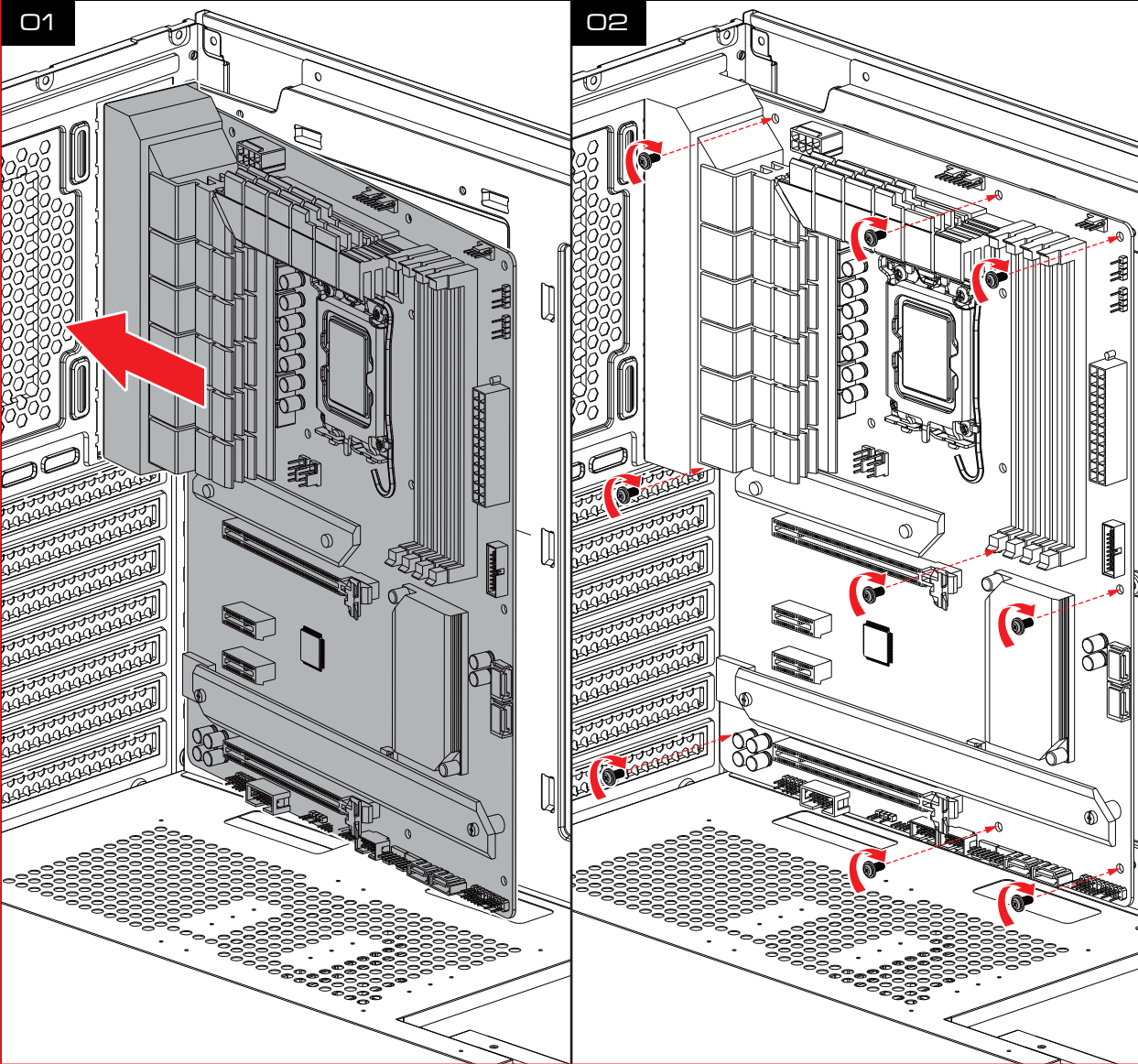
8. Fan Support : Top: 2 x 120mm Front: 3 x 120mm Rear: 1 x 120mm

9. Motherboard Sync : No

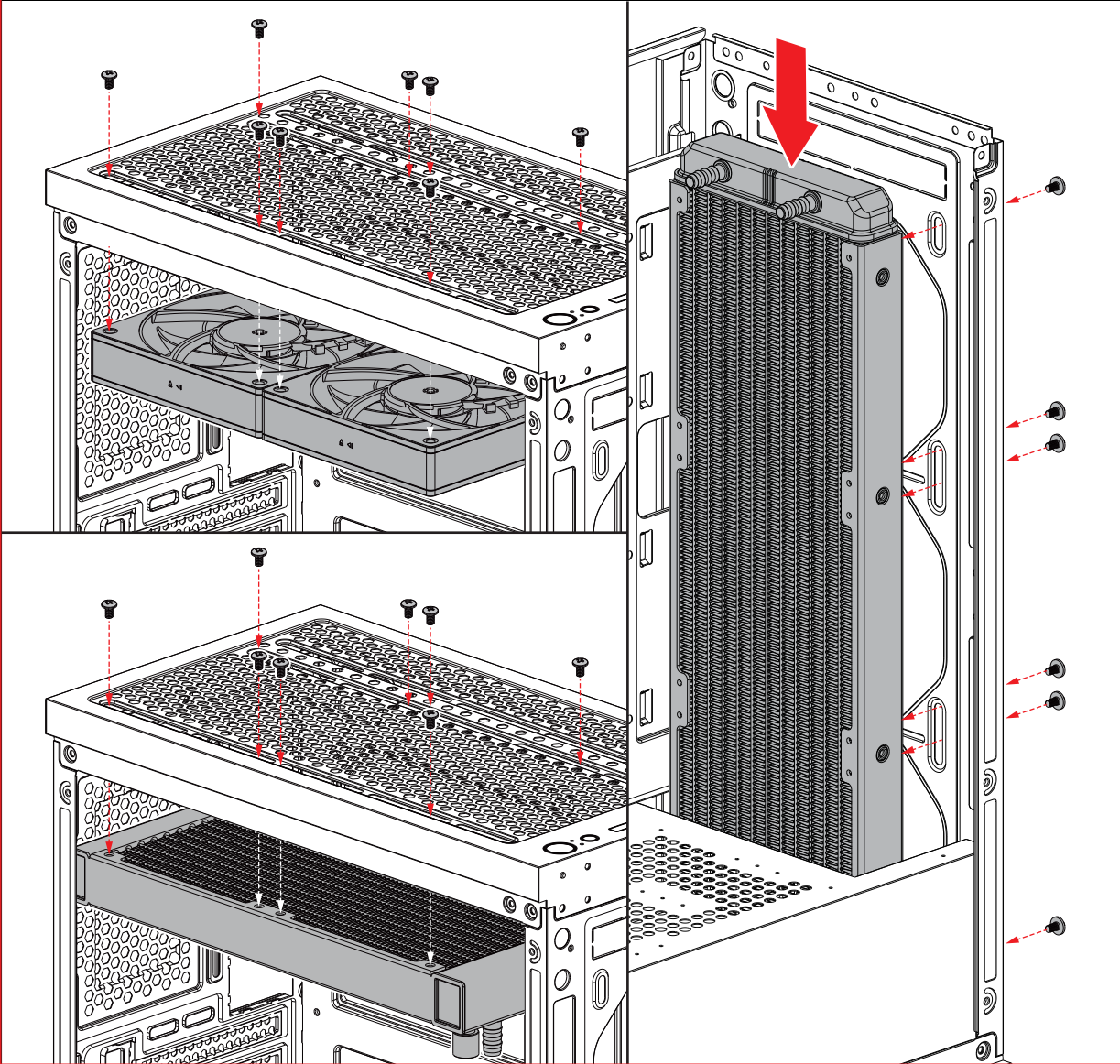
10. Drive Bays : 2 x 3.5" or 1 x 2.5"+1 x 3.5"(HDD Cage) · 1 x 2.5"

11. Clearance : CPU cooler height limitation: 160mm VGA length limitation: 300mm PSU length limitation: 150mm

## ▼ Motherboard Installation



## ▼ Fan and Cooling System Setup





▼ Front I/O cables

USB 3.0 → Motherboard

USB 2.0 → Motherboard

Power Switch → IO Panel

HD Audio → Motherboard

▼ Front I/O cables

ARGB Cable → Motherboard

SATA Cable → PSU

LED Switch Button

IO Panel

1. Lightly touch the LED button on the case to switch lighting effects.  
2. Press and hold the LED button on the case to enter motherboard sync mode.  
3. In motherboard sync mode, lightly touch the button to exit motherboard sync mode.

▼ GPU Installation

01

02

▼ GPU Installation

03

▼ HDD Installation

01

02

03

▼ SSD Installation

A-01

A-02

B-01

B-02

▼ Other Supports

Troubleshooting and Maintenance

- Regularly clean the dust filters and fans to maintain airflow.
- Check all connections if the system is not powering on.

Warranty and Support Information

- Provide details on the warranty period and how to contact support for assistance