

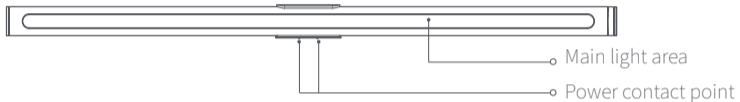
Yeelight Display Hanging Lamp Pro



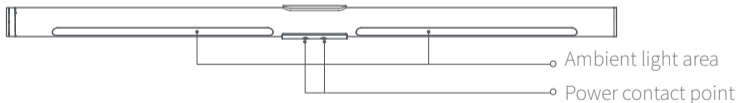
YEELIGHT

Product Description

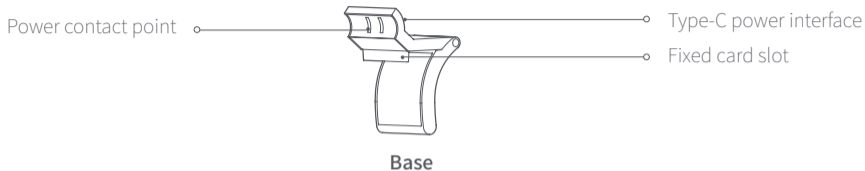
Please read this manual carefully before use and keep it properly.



Lamp body (bottom view)



Lamp body (top view)

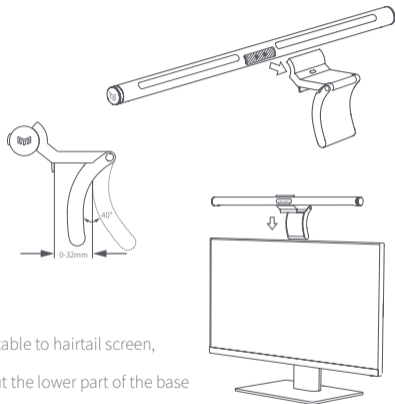


Note: The illustrations for the product, accessories and user interface in the manual are all schematic diagrams for reference only. Due to updates and upgrades of the product, the actual product may be slightly different from that shown in the schematic diagram, and the actual product shall govern.

Installation and Use

1. Install the light bar:

- With the main light area facing downward, connect the power contact point of the lamp body to that of the base;
- Place the base in the middle of the upper part of the display to fasten the fixing buckle to the display screen, with the lower part of the base holding up the back of the display (please remove the protective film from the base surface when placing the base).

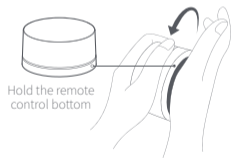


Tips:

- This product is suitable for displays with a thickness $\leq 32\text{mm}$, and adaptable to hairtail screen, curved screen, iMac, etc.
- The product can be hung stably on displays with a thickness $< 10\text{mm}$, but the lower part of the base cannot hold up the display.
- The gravity shaft of the base is adjustable within 40° . Do not pull with excessive force.
- This product can not be used on laptops.

2. Install the remote control battery

- Hold the bottom edge of the remote control with one hand, press the bottom anti-skid pad with the other hand and rotate counterclockwise to open the back cover of the remote control.
- Install two AAA batteries according to the markings indicating positive and negative terminals of the battery compartment.
- Align the triangular arrow at the bottom edge with the area indicating the anti-skid pad lock (the bottom cover of the remote control is opened), and put the back cover in place.
- Hold the bottom edge of the remote control with one hand, press the bottom anti-skid pad with the other hand and rotate clockwise to lock the back cover and complete installation.



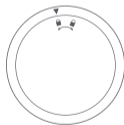
Open the back cover



The remote control bottom cover is opened



Install the back cover



The remote control bottom cover is closed

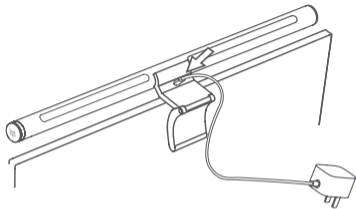
Power supply and use

1. Power supply

Connect the Type-C cord to the power connector, then power it on.

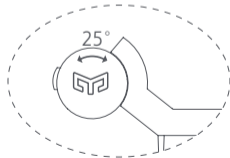
Tips:

- Please use the original power cord. Do not use any USB extension cord or USB hub, otherwise it may result in the abnormality of the hanging lamp
- Do not connect the power contact point of the lamp body or base to other metal conductors, otherwise it may cause damage or other hazards to the product.
- The original power cord is a dedicated accessory for Yeelight display hanging lamp, and cannot be used for fast charging or data transmission for other devices.



2. Adjustment

The lamp is adjustable within 25° by rotating the lamp body.



Light control



Front light on and off



Ambient light on and off



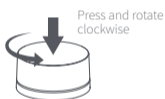
Front light brightness +



Front light brightness -



Front light color temperature +



Front light color temperature -



Mode switching

Tips:

- The remote control has been matched with the hanging lamp by default, and can be used directly.
- If the remote control needs to be matched with other non-original accessories of the same model, please press and hold the knob of the remote control within 20 seconds after the hanging lamp is powered on, and matching is successful if the hanging lamp shows breathing effect.
- Four modes are preset initially and users can customize the number and order of modes to be switched in [Device Settings] - [Knob Settings].

Specifications

Model: YLTD003

Supported operating systems: Android 4.4 or iOS 9.0 and later

Connectivity: Wi-Fi IEEE 802.11 b/n/g 2.4GHz

Rated power: 10W (80×0.2W/LED module+40×0.2W/LED module)

Operating Frequency: 2412 – 2472 MHz (Lamp Body) 2405–2470 MHz (Remote Control)

Maximum Output Power: 15.82dBm(Lamp Body) 7.94 dBm(Remote Control)

This product contains a light source of energy efficiency class <F>

Replaceable (LED only) light source by a professional

Replaceable control gear by an end-user

Operating humidity: 0%—85%RH

Color rendering index: Ra95

Lamp body size: $\phi 23.0 \times 485.5\text{mm}$

Remote control size: $\phi 66.5 \times 34\text{mm}$

Notes

- A remote control can control multiple hanging lamps, but a hanging lamp can only be controlled by one remote control.
- Please clean the product surface with a soft cotton cloth and do not clean it with corrosive solvent.
- After replacement of the remote control batteries, please recycle the waste batteries to avoid environmental pollution.
- The light source is irreplaceable. The entire hanging lamp should be replaced when the light source is at the end of its service life.
- This product can only be used indoors.

Connect with Mi Home / Xiaomi Home App

This product works with Mi Home / Xiaomi Home app *. Control your device, and interact it and other smart home devices with Mi Home / Xiaomi Home app.

- Scan the QR code to download and install the app. You will be directed to the connection setup page if the app is installed already. Or search "Mi Home / Xiaomi Home" in the app Store to download and install it.
- Open Mi Home / Xiaomi Home app, tap "+" on the upper right, and then follow prompts to add your device.



Note: The version of the app might have been updated, please follow the instructions based on the current app version.

Works with Mijia

"Works with Mijia" means that the product can be control by Mi Home app or xiaoi. Please note that "Works with Mijia" only performs software-level verification. Xiaomi and Mijia are not responsible for the manufacturing, standard implementation and quality supervision of the products and enterprises.



已接入米家
works with
mijia

Connect to Yeelight App

This product can be controlled on Yeelight App and be configured to interact with other Yeelight products.

Download App

Search for "Yeelight" in an App store or scan the QR code on the right to download and install the App.

Add Device

- Go to the Yeelight App homepage, and click "+" in the upper right corner to add your device.
- Proceed with the configuration as instructed on the App.
- Once you've added a device successfully, you can find it in the device list.



Note: The operation procedure may differ from what's described here due to App updates. Please proceed as instructed on the App.

Precautions

- One remote control can control multiple light bars, but a light bar can only be controlled by one remote control.
- When cleaning the surface of the light bar, wipe it clean with a soft cloth. Never use any corrosive solvents.
- When installing or moving the light bar, please take both of the light bar and base to avoid damage to the product or personal injury caused by falling parts.
- The running-out non-rechargeable batteries cannot be recharged. Different types of batteries, as well as old and new batteries, should not be mixed.
- If the remote control does not work properly after a period of normal use, the battery level may be low. Please replace the batteries with new ones, and properly dispose of the old batteries in accordance with local rules and regulations so as to avoid environmental pollution.
- After replacing the remote control's batteries, please recycle the old batteries to avoid environmental pollution.
- The batteries must be removed from the remote control when the remote control is not used for a long time, or when it is being disposed of.
- Remove leaking batteries from the remote control, and dispose of them in accordance with local rules and regulations so as to avoid environmental pollution.
- The light source contained in this luminaire shall only be replaced by the manufacturer or his service agent or a similar qualified person.
- This product is intended for indoor use only.
- Under normal use of condition, this equipment should be kept a separation distance of at least 20cm between the antenna and the body of the user.
- When installing the light bar onto the base, make sure the power contact points on the light bar and the base are aligned correctly.

CE EU Declaration of Conformity

Hereby, Qingdao Yeelink Information Technology Co., Ltd. declares that the radio equipment type YLTD003 is in compliance with Directive 2014/53/EU.



WEEE Disposal and Recycling

All products bearing this symbol are waste electrical and electronic equipment (WEEE as in directive 2012/19/EU) which should not be mixed with unsorted household waste. Instead, you should protect human health and the environment by handing over your waste equipment to a designated collection point for the recycling of waste electrical and electronic equipment, appointed by the government or local authorities. Correct disposal and recycling will help prevent potential negative consequences to the environment and human health. Please contact the installer or local authorities for more information about the location as well as terms and conditions of such collection points.

Manufacturer: Qingdao Yeelink Information Technology Co., Ltd
Address: 10F-B4, Building B, Qingdao International Innovation Park, No.1
Keyuan Weiyi Road, Laoshan District, Qingdao City, Shandong Province,
P.R.China
Website: www.yeelink.com
Customer Service Email: support@yeelink.com