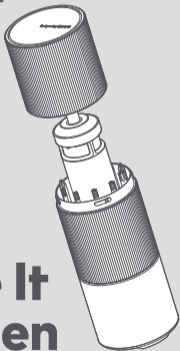


HOTO
PixelDrive Cordless
Screwdriver



Make It
Happen



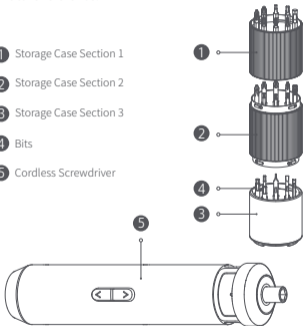
Visit our website for more Cool Tools
(www.hototools.com)

Product Overview

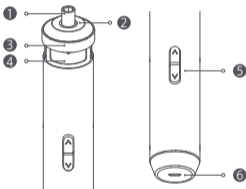
Thank you for purchasing the HOTO PixelDrive Cordless Screwdriver.

Please read this manual carefully before use, and keep it for future reference.

- 1 Storage Case Section 1
- 2 Storage Case Section 2
- 3 Storage Case Section 3
- 4 Bits
- 5 Cordless Screwdriver



Illustrations of the product and its accessories and user interfaces in this manual are for reference only. Due to product updates and upgrades, the actual product may differ slightly from illustrations. Product specifications are subject to change without prior notice.



- ① Bit Holder
- ② Work Light
- ③ Torque Regulating Ring
- ④ LED Display
- ⑤ Forward/Reverse Button
- ⑥ USB-C Charging Port

How to Use

Using the Storage Case

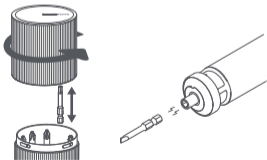
The bits and the screwdriver are stored in the storage case. The case consists of three sections, connected by a twist-lock mechanism.

Rotate counterclockwise and pull to detach a section; rotate clockwise and press to attach a section.

Using Bits

Bits are magnetically stored in the base. To use a bit, remove it from the storage case and insert it into the bit holder.

Once inserted, the bit becomes magnetized in the central magnetization zone. The magnetic force is transferrable, allowing most screws to be held magnetically.

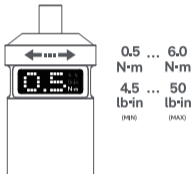


Regulating Torque Levels

Rotate the torque regulating ring to switch among 6 levels and one OFF position.

The torque level is shown on the LED display.

Rotate clockwise to increase torque and counterclockwise to decrease.



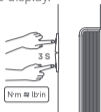
Torque Level Information

OFF

- I 0.5N·m (4.5lb·in)
- II 1.0N·m (10lb·in)
- III 2.0N·m (20lb·in)
- IV 3.0N·m (30lb·in)
- V 4.0N·m (40lb·in)
- VI 6.0N·m (50lb·in)

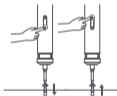
Changing Torque Unit

Press and hold the Forward/Reverse Button together for at least 3 secs to change the torque unit (lb·in or N·m) shown on the LED display.



Forward/Reverse Button

Press the ∇ side to drive in or tighten screws.
Press the \blacktriangle side to loosen or remove screws.

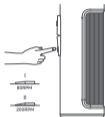


Work Light

The brightness of the work light is automatically adjusted via an onboard chip to suit various environments. Hold the Forward/Reverse Button to keep the work light on to provide illumination during operation.

Speed Control

The speed control button offers two speed levels. Switch the speed by lightly press the button to use at 80RPM, or press the button with a little bit force to use at 200RPM.



Screen Display

The LED display shows both torque level and battery level.

Torque Level

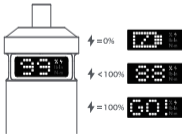
When the torque regulating ring is rotated, the display shows torque level changes.

When the Forward/Reverse Button is pressed and held for 3 seconds, the display shows torque unit changes (between $\text{lb} \cdot \text{m}$ and $\text{N} \cdot \text{m}$).

Battery Level

When the screwdriver is activated via the Forward/Reverse Button, the display shows the battery level.

- When the battery level is at or below 20% but still above 1%, a lightning icon will flash to indicate low battery.
- When the battery level drops to 1% and the screwdriver cannot be turned on, the lightning icon and the battery level animation will flash at the same rate.
- When the battery level is at 0, the display will shut off.
- During charging, when the battery level is $\leq 20\%$, the lightning icon flashes slowly.
- During charging, when the battery level is between 20% and 100%, the lightning icon breathes.
- During charging, when the battery level reaches 100%, the lightning icon stays on and displays a "GO!" animation.



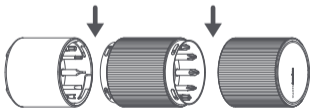
Charging

- The product is provided with a universal USB-C charging port and a USB-C charging cable. Charger is not included. Please charge the product with a DC charger at an output of 5V and a current between 500mA and 2,000mA.
- The charging time is approximately 3 hours, depending on the charger used. Please do not use the product during charging, this product can't be turned on while charging.
- Charge the product promptly when battery is low.
- Avoid overcharging or over-discharging the battery to prevent damage.



Precautions

- Rotating the storage case sections too quickly when attaching them may pinch your fingers. Do not insert fingers into illustrated areas when detaching or attaching the case sections.
- Before using this product, ensure the power supply to any electrical parts has been detached. The product is not a toy. Keep it out of reach of children. The product is intended for use by individuals aged 16 or above only.
- The torque values listed in product specifications apply to the screwdriver only. The product is intended for precision maintenance tasks. During operation, please use a bit that matches the screw. During manual operation, avoid applying excessive force to prevent unnecessary damage to the screw or bit.



Specification

Product Name: HOTO PixelDrive Cordless Screwdriver

Product Model: QWLSD014

Item Dimensions: $\Phi 38 \times 198\text{mm}$

Net Weight: Approx.317g

Nominal Capacity: 2000mAh

Charging Time: Approx.180min

Nominal Voltage: 3.6V 

Input Parameter: 5V  1A

Maximum Torque in Electric

Mode: 0.5-6.0 N.m

Maximum Torque in Manual

Mode: 8.0 N.m

No-Load Speed: 80/200RPM

Chuck Size: C6.3

Information

The declared vibration total value(s) and the declared noise emission value(s) have been measured in accordance with a standard test method and may be used for comparing

one tool with another; The declared vibration total value (s) and the declared noise emission value(s) may also be used in a preliminary assessment of exposure.

The vibration and noise emissions during actual use of the power tool can differ from the declared values depending on the ways in which the tool is used especially what kind

of workpiece is processed; and It is necessary to identify safety measures to protect the operator that are based on an estimation of exposure in the actual conditions of use (taking account of all parts of the operating cycle such as the times when the tool is switched off and when it is running idle in addition to the trigger time).

Declaration of the noise emission values according to EN 62841


(considered uncertainty 5 dB (A))

Sound pressure level: 6/dB(A)

Sound power level: 78dB(A)

Declaration of the vibration emission according to EN 62841 (considered uncertainty 1.5 m/s³): 1.3 m/s



All products bearing this symbol are waste electrical and electronic equipment (WEEE as in  directive 2012/19/EU) which should not be mixed with unsorted household waste. Instead, you should protect human health and the environment by handing over your waste equipment to a designated collection point for the recycling of waste electrical and electronic equipment, appointed by the government or local authorities. Correct disposal and recycling will help prevent potential negative consequences to the environment and human health. Please contact the installer or local authorities for more information about the location as well as terms and conditions of such collection points.

Troubleshooting

Fault	Cause	Solution
Unable to turn on	Out of battery	Please charge the equipment in time.
Device stops rotating during use	Device is operating under heavy load continuously, triggering overheat protection or low voltage protection	Let the device cool down
Unable to install accessories	Accessory size does not match the tool head	Use the accessories provided in the box, or accessories of the correct size
Unable to charge	Charging cable is not properly connected	Reconnect the charging cable

Notes for packaging



The packaging materials are recyclable. Please dispose of packaging in an environmentally friendly manner.

EC

REP

HOTO EUROPE AB
Pumpgatan 1, 417 55 GÖTEBORG,
Sweden
service@hototools.com

CE We Shanghai HOTO Technology Co., Ltd., hereby, declares that this equipment is in compliance with the applicable Directives and European Norms, and amendments.

Manufacturer: Shanghai HOTO Technology Co., Ltd.

Address: Building 45, No. 50, Moganshan Road, Shanghai, China

Federal Communications Commission Supplier's Declaration of Conformity

This supplier's declaration of conformity is hereby for
We declare that the above mentioned device has been tested

and found in compliance with CFR 47 Part 15 Regulation.

Product: HOTO PixelDrive Cordless Screwdriver

Product model: QWLSD014

Brand/Trade: HOTO

This device complies with part 15 of the FCC Rules.

Operation is subject to the following two conditions: (1)

This device may not cause harmful interference, and (2)

this device must accept any interference received, including interference that may cause undesired operation.

Note: This equipment has been tested and found to comply with the limits for a Class B digital device, pursuant to part 15 of the FCC Rules. These limits are designed to provide

reasonable protection against harmful interference in a residential installation. This equipment generates, uses and can radiate radio frequency energy and, if not installed and used in accordance with the instructions, may cause harmful interference to radio communications. However, there is no guarantee that interference will not occur in a particular installation. If this equipment does cause harmful interference to radio or television reception, which can be determined by turning the equipment off and on, the user is encouraged to try to correct the interference by one or more of the following measures:

- Reorient or relocate the receiving antenna.
- Increase the separation between the equipment and receiver.
- Connect the equipment into an outlet on a circuit different from that to which the receiver is connected.
- Consult the dealer or an experienced radio/TV technician for help.

Representative of Responsible Party for SDoC

Company: HOTO (US) TECHNOLOGY CO LTD

Address: 919 North Market Street, Suite 950,
Wilmington DE 19801

Country: U.S.A.

Customer Service(US): +1 855-577-2659

service@hototools.com

Mon-Fri 9:00am-5:00pm(CST)

DECLARATION OF CONFORMITY



EU Declaration of Conformity

We

Shanghai HOTO Technology Co., Ltd.

Declare that the product:

HOTO PixelDrive Cordless Screwdriver /
QWLSD014

Complies with the essential health and safety requirements of
the following directives:

2014/30/EU Electromagnetic Compatibility directive References
to the following harmonized standard were made:

EN IEC 55014-1:2021

EN IEC 55014-2:2021

EN IEC 61000-3-2:2019+A2:2024

EN 61000-3-3:2013+A2:2021

2011/65/EU+ (EU) 2015/863 Restrictions of the Use of Certain
Hazardous Substances in Electrical and Electronic Equipment

Authorised signatory and technical file holder:

Shanghai HOTO Technology Co., Ltd.

Building 45, No.50 Moganshan Road, Shanghai, China

Designed by **HOTO**