

SENCOR®

SVC 7221BK



CORDLESS VERSATILE VACUUM CLEANER 2 IN 1

Translation of the original manual

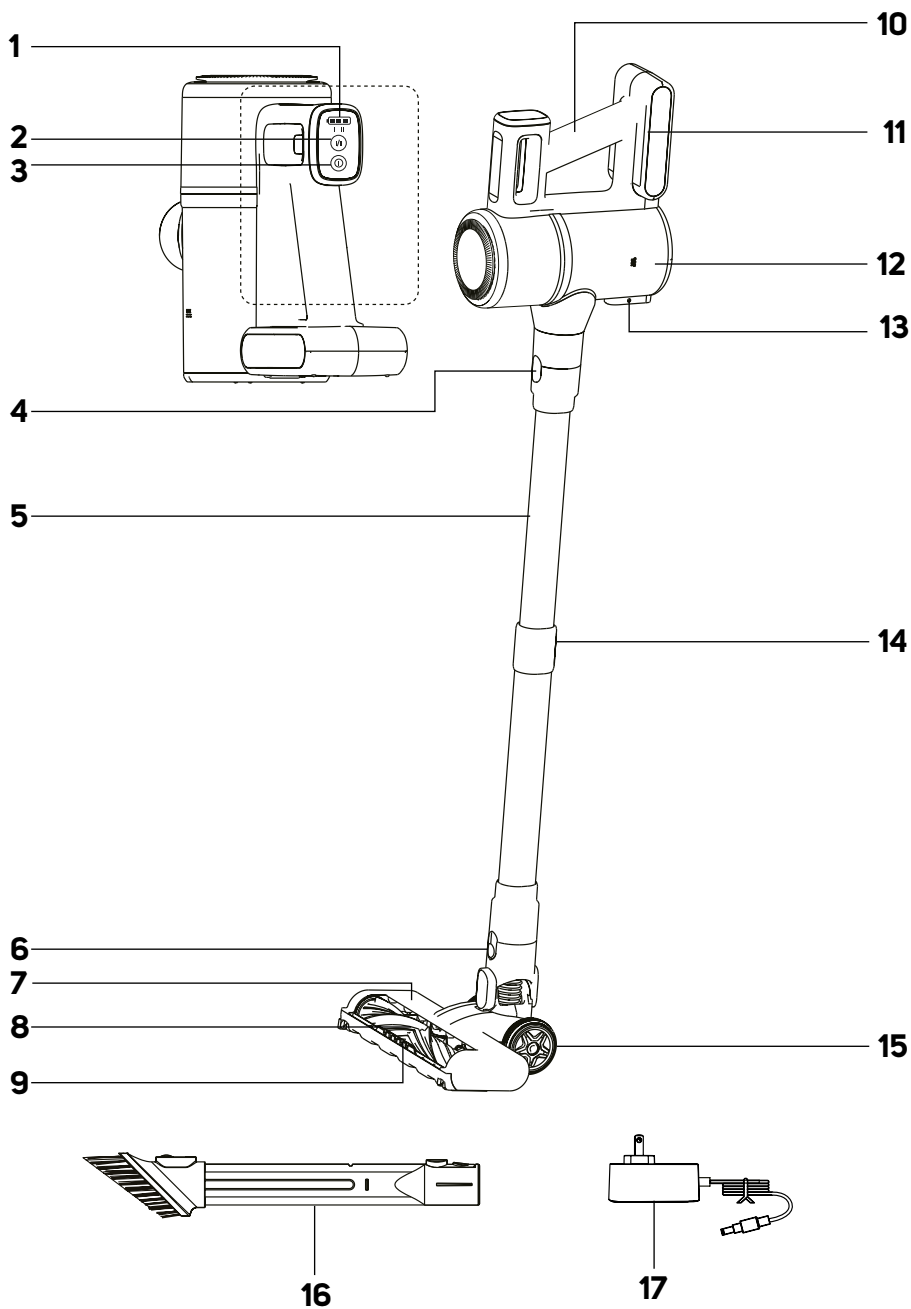


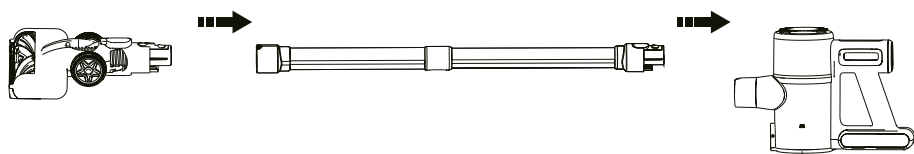
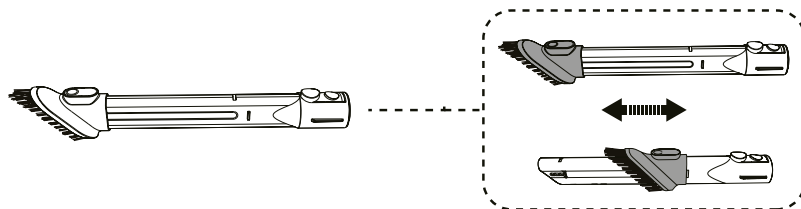
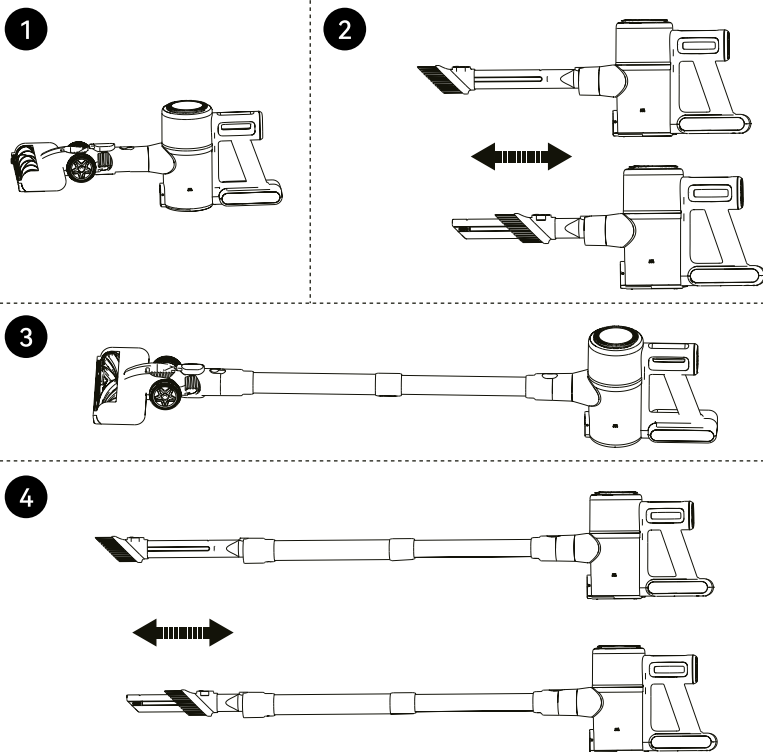
SENCOR®

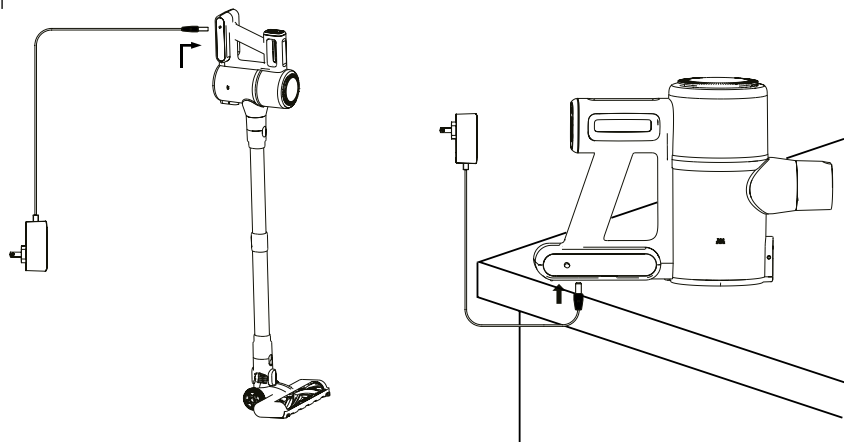
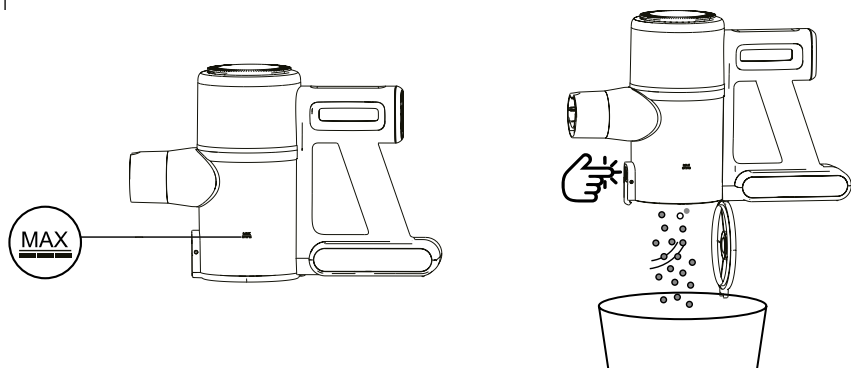
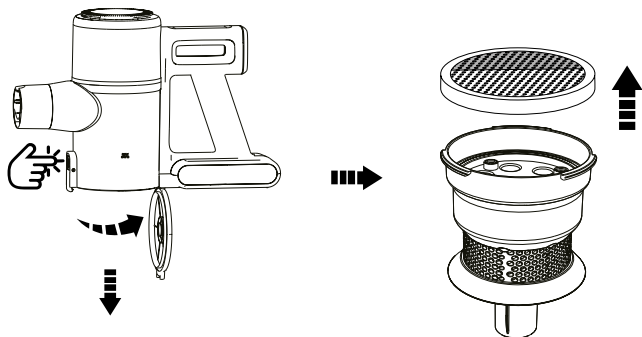
SVC 7221BK



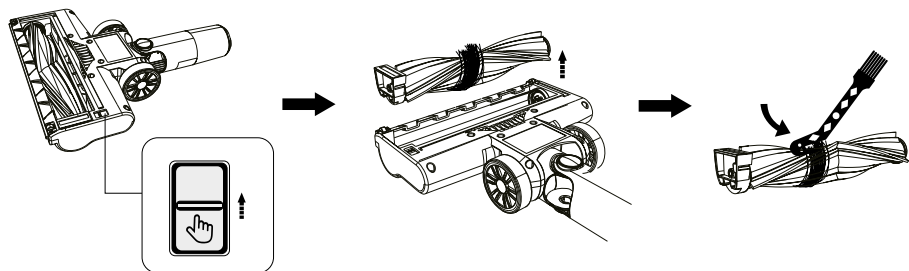
A



B**C****D**

E**F****G**

H



Important Safety Instructions

READ CAREFULLY AND STORE FOR FUTURE USE.

- This vacuum cleaner may be used by children 8 years of age and older and by persons with physical, sensory or mental impairments or by inexperienced persons, if they are properly supervised or have been informed about how to use of this vacuum cleaner in a safe manner and understand the potential dangers.
- Children must not play with the appliance. Cleaning and maintenance must not be performed by unsupervised children.
- If the power adapter is damaged, it must be replaced by the original type. For a replacement power adapter contact an authorised service centre. It is forbidden to use the appliance if it has a damaged power adapter.



WARNING:

Avoid contact with the rotating parts of the hand-held accessories of the vacuum cleaner. There is a risk of catching on these parts and possible injury. Only use the vacuum cleaner with the original power adapter, charging base and accessories supplied with it.

.....

Additional Important Safety Instructions for Use of the Appliance

- This vacuum cleaner is designed for use in households, offices and similar types of areas. Do not use in industrial surroundings.
- Do not expose the vacuum cleaner to direct sunlight and do not place it near an open fire or appliances that are a source of heat.
- Before connecting the adapter to a power socket check that the technical details on its rating label match the electrical voltage in the socket.
- Make sure that the power cord of the power adapter does not touch hot surfaces or sharp objects. Position the power cable so that it is not tripped over.
- Do not submerge the vacuum cleaner, charging base or power adapter in water or any other liquid, and do not rinse it with running water.
- Before turning on the vacuum cleaner, ensure that it is correctly assembled and that all input and output filters are installed in their places.
- Make sure that the air outlet or suction opening is not blocked when the vacuum cleaner is in operation.
- Do not use the vacuum cleaner to vacuum the following items:
 - smouldering cigarettes, burning objects, matches or hot ashes;
 - water and other liquids;
 - flammable or volatile substances;
 - sharp objects such as shards, needles, pins, etc;
 - flour, plaster, cement and other building materials;
 - larger pieces of paper or plastic bags, which can easily block the suction opening.
- Vacuuming certain types of floor coverings may create electrostatic charge, which poses no danger to the user.
- Always switch off the vacuum cleaner when left unattended, after use and before cleaning.
- Before cleaning and after charging, disconnect the power adapter from the socket.
- When disconnecting the power adapter from the socket, always pull the plug, not the power cord. Otherwise, damage to the power cord or the socket could occur.
- If the power adapter is damaged, it must be replaced with the original type. For a replacement power adapter contact an authorised service centre.
- Do not use the vacuum cleaner if it is not working correctly, if it has been damaged or has been submerged in water.
- Do not repair or modify the vacuum cleaner yourself. All repairs should be carried out by an authorised service centre. Tampering with the appliance may result in the loss of your legal rights regarding faulty performance or warranty for quality.

EXPLANATION OF SYMBOLS PLACED ON THE PRODUCT OR IN THE ACCOMPANYING DOCUMENTATION



The product meets all the basic requirements of the applicable EU directives.



This symbol on products or original documents means that used electric or electronic products must not be added to ordinary municipal waste.



Product with protection class II
Electric shock protection is provided by double or heavy-duty insulation.



The product is intended for household use only. The product is not intended for outdoor use.



Before using the product, please carefully read all instructions for use.



This symbol indicates that the appliance must not be used if the power plug is damaged.

Cordless Versatile Vacuum Cleaner 2 in 1

User Manual

- Thank you for purchasing our SENCOR product; we hope it will serve to your satisfaction.
- Prior to using this appliance, please read the user manual thoroughly, even in cases when you are already familiar with the use of similar types of appliances. Use the appliance only as described in this user manual. Keep the manual for future reference. If you pass the appliance on to another person, ensure that this user manual is included.
- Carefully unpack the appliance and make sure not to discard any part of the packaging material until you have found all its components. It is recommended to keep the original packaging, packing material, receipt and confirmation of the extent of the seller's liability or warranty certificate at least for the duration of the legal right of defective performance or quality guarantee. When transporting the appliance, we recommend packaging it again in the original box provided by the manufacturer.
- The charging indicator will flash slowly. Charging time is usually 5.5 hours. The battery is charged when the charging indicator stops flashing and lights up.
- Disconnect the power adapter connector from the battery socket before using the vacuum cleaner. Connect the power adapter connector to the battery socket once you finish vacuuming and clean the vacuum cleaner.
- Keep the charging power supply permanently in the power socket. The electronics in the device control the charging of the battery so that it is always optimally charged. When the battery is fully charged, the electronics will stop charging and recharge the battery if necessary. There is no need to worry about unnecessary electricity consumption.
- Only in case of prolonged absence, pull the charging power supply out of the power socket. After returning, insert it into the socket so that the vacuum cleaner is ready for further use. The battery charge status will be displayed on the screen. If the state of charge drops below 20%, the vacuum cleaner will automatically switch from high power to low power. High power cannot be set.
- As soon as the battery is almost discharged, the vacuum cleaner automatically stops running to prevent the battery from being completely discharged.

DESCRIPTION

A1 Battery charge indicator	A12 Dust container
A2 I/II button to set the power	A13 Dust container bottom release button for quick removal of dirt
A3 On/off button	A14 Button to adjust the length of the metal tube
A4 Motor unit release button	A15 Travel wheels
A5 Metal tube	A16 Combination slot nozzle with a retractable brush
A6 Floor nozzle release lock	A17 Power adapter
A7 Floor nozzle	Without illustration:
A8 Electric brush lock	Wall mount, dowels and screws
A9 LED light	
A10 Handle	
A11 Battery	

ASSEMBLING AND DISASSEMBLING THE VACUUM CLEANER

1. Assembly and disassembly of the vacuum cleaner (fig. B)

- Always place the floor nozzle on a flat, dry and stable surface. Attach the tube to the floor nozzle so that the connectors at the back of the floor nozzle are aligned with the holes in the inside of the tube. Press until you hear a click.
- Insert the outlet hole of the motor unit into the tube so that the connectors at the back of the tube are aligned with the holes in the inner space of the outlet hole.
- If you need to unfold the vacuum cleaner, press the lock to release the motor unit. Then press the lock to release the floor nozzle.

2. Assembling and disassembling the vacuum cleaner with accessories

- To ensure perfect cleaning of your home, you can connect some of the supplied accessories to the outlet of the motor unit. Simply remove the accessory by pulling the accessory out of the outlet of the motor unit. For the rotary brush, first press the lock to release it.

COMBINATION SLOT NOZZLE (FIG. C)

- Slot nozzle for vacuuming in hard to reach places (e.g. windows, corners, book shelves, areas between mattresses, upholstery, etc.). Hold down the button and move the brush forward. To retract the brush, press the button and move it backwards.



Note:

For options on how to connect the accessories with each other, see Figure D.

CHARGING THE BATTERY

- The battery is partially charged from the factory and needs to be charged to full capacity.
- Connect the power adapter connector to the socket on the side of the battery and connect the adapter plug to a mains socket (see Figure E).

USING THE VACUUM CLEANER

1. Assemble the vacuum cleaner according to the instructions in the **"ASSEMBLING AND DISASSEMBLING THE VACUUM CLEANER"** section.
2. Press the On/Off button and the vacuum cleaner will start.
3. You can set the vacuum cleaner power using the +/- buttons. The following options are available:
 - daily cleaning,
 - maximum power output.
4. When you have finished using the vacuum cleaner, press the on/off button to switch the vacuum cleaner off.



Note:

The electric rotary brush will stop automatically if it is blocked, e.g. by a foreign object or a large amount of hair or dirt. This is a safety feature to protect the brush from damaging. In this case, turn off the vacuum cleaner by pressing the on/off button and remove the blocked object or hair from the brush.

STORAGE DURING REGULAR USE

The SVC 7221BK comes with a bracket that can be mounted on the wall. Choose a place where the holder will be easily accessible and there will be enough free space around it.

Mounting the Wall Bracket

1. Place the bracket against the wall and use a pencil to mark the places on the wall where the holes will need to be drilled.
2. Drill the two holes into which the dowels are inserted.
3. Place the bracket against the wall and into the hole in the bracket insert the screws that tighten with a screwdriver. Check that the bracket does not move and that the bolts are properly tightened.

CLEANING AND MAINTENANCE

Make sure that the vacuum cleaner is turned off before cleaning.

CLEANING THE MOTOR UNIT AND THE ACCESSORIES

To clean the outer parts of the vacuum cleaner, use a soft cloth dipped in lukewarm water. Do not use aggressive cleaning agents, thinners or solvents. Using these solutions could damage the surface of the appliance.

Emptying the Dust Container (Fig. F)

We recommend cleaning and emptying the dust container after each use. However, if the level of dirt reaches the MAX line, the dust containers must be emptied immediately.

1. Remove the attached accessory from the motor unit.
2. Move the motor unit over the trash can so that the bottom of the dust container is pointing down.
3. Press the bottom release button and the bottom of the container will release and open.
4. By doing this, you will dump the contents of the container directly into the garbage bin.
5. Close the bottom of the container by hand. Correct locking is indicated by a click.

Cleaning the Dust Container (Fig. G)

1. Regularly clean the dust container to prevent the formation of unpleasant odours.
2. Remove the attached accessories from the motor unit and empty the dust container as instructed above.
3. Turn the filter unit to release it and remove it.
4. Wipe the inner walls of the dust container with a slightly moistened soft sponge. Wipe dry with a clean cloth.
5. Remove the filter and remove the dirt from it. The filter is washable. In the event of heavy soiling, you can wash it in clean water using a soft sponge. Then wipe dry or allow to dry freely. Make sure the appliance is fully dry before assembling.
6. Rinse the filter unit under clean running water and wipe them dry with a clean cloth.
7. Make sure all parts are dry.

8. Insert the filter into the filter unit and insert it into the dust container.
9. Close the bottom of the container by hand. Correct locking is indicated by a click.



Warning:

Do not install a wet or damp filter. There is a risk of damaging the vacuum cleaner and creating a dangerous situation.

Cleaning the floor nozzle (fig. H)

The floor nozzle must be cleaned regularly to ensure the required and consistent suction performance.

1. Remove the floor nozzle from the vacuum cleaner and turn it upside down.
2. Press the lock to release the rotating brush.
3. Carefully remove the rotary brush.
4. Remove wound hair, hair and other dirt from the rotary brush. For faster removal of tangled hair or hair, you can use scissors.

Storage

- If the vacuum cleaner will not be used for a long time, clean it according to the above instructions.
- Before storing, make sure that the appliance and all accessories are thoroughly clean and dry.
- Store the appliance in a dry, clean, and well-ventilated place away from extreme temperatures and out of the reach of children or pets.
- We recommend that you recharge the battery regularly, every 6 months.

TROUBLESHOOTING

Before you decide to contact an authorized service centre, please read the following tips in the troubleshooting chart:

Problem	Possible Cause	Solution
The vacuum cleaner will not start.	The battery is depleted.	Charge the battery before using the vacuum cleaner.
	A large amount of hair is tangled on the rotary brush.	Clean the rotating brush.
	The dust container is full.	Empty the dust container.
The suction output is weak.	The dust container is full.	Empty the dust container.
	The filter unit is not inserted correctly.	Correctly insert the filter unit.
	A large amount of hair is tangled on the rotary brush.	Clean the rotating brush.
	The battery is depleted.	Charge the battery before using the vacuum cleaner.
	Suction opening is blocked.	Remove the dirt from the suction hole.
The engine makes an unusual sound.	Suction opening is blocked.	Remove the dirt from the suction hole.
	The dust container is full.	Empty the dust container.
	The filter unit is not inserted correctly.	Correctly insert the filter unit.
The battery does not charge itself.	The adapter is not connected correctly.	Connect the adapter correctly until the charge indicator starts flashing slowly.
	You are not using an original adapter.	Use only the supplied adapter.



Warning:

If your problem is not listed in the table above or the problem persists, stop using the vacuum cleaner, turn it off and contact an authorised service centre.

.....

TECHNICAL SPECIFICATIONS

Adapter

Input.....100–240 V~ 50/60 Hz 0.5 A
Output.....27 V= 0.5 A, 13.5 W

Vacuum cleaner

Power consumption200 W
Electric rotary brush 15 W
Battery Li-Ion / 22,2 V / 2600 mAh
The time required for a full charge.....approximately 5.5 hours
Operating time at full charge up to 35 min
Noise level.....<76 dB(A)
Dust container capacity 0,55 l

The declared noise emission level of the appliance is ≤ 76 dB(A), which represents a level A of acoustic power with respect to a reference acoustic power of 1 pW.

.....

INSTRUCTIONS AND INFORMATION ON DISPOSAL OF USED PACKAGING MATERIAL

Dispose of used packaging material at the location designated by the municipality for waste disposal.

DISPOSAL OF USED ELECTRICAL AND ELECTRONIC EQUIPMENT

Used electrical and electronic products must not be added to ordinary municipal waste. For proper disposal and recycling of these products, deliver them to designated collection points. Alternatively, in some European Union states or other European countries the products can be returned to the local retailer when buying an equivalent new product. By properly disposing of this product, you help preserve valuable natural resources and contribute to preventing potential negative impacts on the environment and human health resulting from improper waste disposal. For more details, contact your local authority or nearest collection point. Fines may be imposed for improper disposal of this type of waste as per national regulations.

For Business Entities in European Union States

To dispose of electric or electronic equipment, request necessary information from your retailer or supplier.

Disposal in Other Countries Outside the European Union

If you wish to dispose of this product, request the necessary information about the correct disposal method from the local council or from your retailer.

.....

Changes to text and technical parameters are reserved.

FAST ČR, a.s.
U Sanitasu 1621
CZ-251 01 Říčany
www.sencor.com
info@sencor.cz