


Instructions on Dismantling at end of life of Light sources and separate control gear (EU) 2019/2020

Product details

Product : Refrigerator-Freezer
Brand : SAMSUNG
Model(s) : RR39*****, RR40*****, RZ32*****
Manufacturer: : Samsung Electronics Co., Ltd
Factory
 Samsung Electronics HCMC CE Complex Co.,Ltd.
 Lot I-11, D2 Road, Saigon Hi-Tech Park Tang Nhon Phu B Ward, Thu Duc City, Ho Chi Minh City, Vietnam

- ☐ Which components are included;
 - light source(s) : Yes
 - separate control gear(s) : No

1. Tools needed

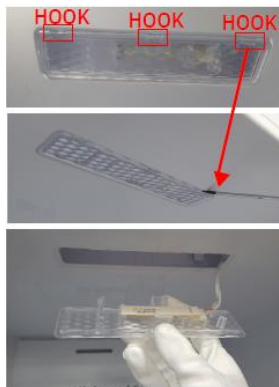
| Item | How to use | Pictures |
|--------|--|--|
| Driver | Use for assembling and disassembling of screw. |  Phillips Head Driver & Flat Head Driver |

2. Dismantling LED light at end of life: Please refer to the disassembly method below.

[Precautions]

- Be sure to unplug the power cord before dismantling.
√ Electrification
- Dismantling of Lamp(s) and Control gear(s) shall be done by Samsung Service Center or Professional repairer.

Light Source 1



[Disassembly]

1. Insert a flat-head screwdriver into the hook and pull out the cover



Take care not to scratch the cabinet or damage the screw cover.



Be sure to unplug the power cord before performing the operation above.



[Disassembly]

2. Pulling it to the direction of the arrow on the left
3. Remove the connector from the LED LAMP